



Approval of the Public Art Concept for Keele Station

Date: September 24, 2024
To: TTC Board
From: Chief Capital Officer

Summary

Art is an important piece of any major station upgrade. It enhances a station's appearance and spirit and punctuates a city's culture and vibrancy.

In accordance with the TTC's Art in Public Transit Facilities Policy (Appendix A), public art is being provided at Keele Station as part of the Easier Access Phase III (EAIII) project.

An open call for artist prequalification was held, and a jury selected three artists to provide art concepts. Artists and art concepts for Keele Station were selected by a jury consisting of artists, art educators, and art administrators, including a local representative and the TTC Senior Project Engineering Co-ordinator. The TTC's art consultant facilitated them. The concept will be presented to the community at a public open house by the end of 2024.

Recommendations

It is recommended that the TTC Board:

1. Approve the public art concept for Keele Station Easier Access: "*Transcendence*" by Jordan Sook in collaboration with George Foussias.

Implementation Points

Following the Board's approval, TTC staff will notify the artist of the award for the art project. This will allow the artist to start designing and fabricating the art piece, including any site-related reviews.

Financial Summary

Sufficient funds for this expenditure are included in the TTC's 2024-2033 Capital Budget and Plan under Program 3.9, Building and Structures – Easier Access III project, which was approved by the TTC Board on December 20, 2023, and by City Council on February 14, 2024.

The total project cost of the Easier Access III (EAIII) program, which includes Islington and Warden Redevelopment projects, is approximately \$1,169.8 million, of which \$656 million has been spent to the end of 2023 and annual cash flow funding totalling \$513.8 million between 2024-2028, as presented in Table 1 below.

Of the total project cost, approximately \$1,038 million has been committed to date, of which \$366.6 million of the approved funding in the 2024-2033 Capital Budget and Plan has been committed.

Table 1: Easier Access III – 2024-2033 Capital Budget and Plan

2024-2033 Capital Budget and Plan (000's)	LTD Actuals to 2023	2024 Budget	2025	2026	2027	2028	2029-2033	10-Year Total	Total Project Cost
Easier Access Phase III*	655,975	103,698	152,436	121,807	101,448	34,454	-	513,842	1,169,817

* includes Islington & Warden Station Redevelopment

In accordance with the TTC’s Art in Public Transit Facilities Policy, outlined in Appendix A, the public art budget is set at approximately 1% of the construction budget for the public areas of these projects, and funds are included in the overall approved project cost for the EAIII program.

Once approved by the TTC Board, a contract of \$190,000 for Keele Station will be awarded to the artist.

The Chief Financial Officer has reviewed this report and agrees with the financial impact information.

Equity/Accessibility Matters

Equity, Diversity, Inclusion and Accessibility is a key principle of the TTC’s Corporate Plan, and as a proud leader in providing accessible public transit to the residents in the City of Toronto and surrounding municipalities, the TTC is committed to ensuring reliable, safe, accessible, and inclusive transit services for all its customers.

This art initiative supports this, which improves the customer experience in each station by creating welcoming and inspiring environments for commuters.

The TTC continues to seek ways to improve its approach and work toward building and strengthening partnerships in the community. The TTC’s commitment to equity and accessibility is reflected in the diverse representation of jury members and finalists in the selection and evaluation process.

Decision History

In December 2015, public art concepts were approved for Coxwell, Wellesley, Royal York, Ossington, and St Clair West stations under the EAIII and Subway Second Exits projects.

[Approval of Art Concepts for Coxwell, Wellesley, Royal York, Ossington and St Clair West Stations – December 16, 2015](#)

In July 2017, public art concepts were approved for Chester, King, Runnymede, Sherbourne, St Patrick, Wilson, and Woodbine stations under the EAIII and Subway Second Exits projects.

[Approval of Art Concepts for Chester, King, Runnymede, Sherbourne, St Patrick, Wilson and Woodbine Stations](#)

In April 2024, public art concepts were approved for Bay, Castle Frank, Christie, Donlands, and Lansdowne stations under the EAIII and Subway Second Exits projects.

[Approval of Public Art Concepts for the Bay, Castle Frank, Christie, Donlands and Lansdowne Stations](#)

Issue Background

Consistent with the TTC's Art in Public Transit Facilities Policy, public art funding has been incorporated into the Easier Access (EAIII) and Second Exit (SE) projects.

The process followed to procure the public art for the EAIII and SE projects is consistent with the City of Toronto's process. The juries are selected and guided by an art consultant and consist of a five-member panel with at least one local (to the station) representative.

Each art concept was evaluated against three main criteria:

- Artistic merit.
- Relationship to the public.
- Relationship to the site.

The technical feasibility of each art concept was also reviewed by the TTC's Engineering Design Division, Chief Architect, and Senior Project Engineering Coordinator for the projects and by the jury.

The art concepts were reviewed by staff from a technical and maintenance perspective, and feedback was provided concerning safety, impact to the building, cleaning, maintenance, damage, and theft. These issues will be addressed during the detailed design stage to ensure the art is well-secured, durable, and properly maintained in the subway environment. At this stage, a final internal review will be conducted to resolve any areas of potential interference with customer and staff safety, and the operations and maintenance of the station, including accessibility, existing fixtures, finishes, wayfinding elements, and advertising requirements.

Potential areas of interference, such as obstructing cameras or signs, will be addressed during the technical review process as the art designs are developed. The contract with the artist will permit the TTC to relocate the artwork, if required, to address a future conflict.

As part of the EAIII and SE projects, art has been installed at the following stations: Chester, Coxwell, Dufferin, Dupont, Ossington, Runnymede, Sherbourne, St Clair West, Wilson and Woodbine.

In addition, artwork is being planned and co-ordinated with Easier Access and Second Exit construction at several other stations under this initiative.

Public art will continue to be commissioned similarly for upcoming Easier Access and Second Exit projects in co-ordination with project construction schedules.

Comments

A Pre-Qualification for Artists was released on April 1, 2021, for six stations. There were 130 respondents from which three artists were selected for each location to provide art concepts for the artist's preferred station.

A Request for Proposals (RFP) was issued to the following three pre-qualified proponents:

- Jordan Sook Studios.
- Julia Dault Studio.
- 10781240 Canada Inc. – Kwest.

The three pre-qualified Proponents submitted a proposal by the closing date of September 21, 2023. During the proposal period, one addendum was issued. The proposal validity expires on October 31, 2024.

All three proposals received were deemed commercially acceptable and were rated by the jury panel. The artists presented their art concepts to the jury between December 5, 2023 and January 16, 2024.

The RFP stated that the submissions would be evaluated by a jury panel. The five-member jury panel consisted of four art experts (one local to the ward where the station is located) and one TTC representative. Each juror had one vote and no juror had the right of veto. The selected art concept would be made by a unanimous vote from the panel. The jury panel also had the right to make no selection.

The evaluation of the proposals and the presentation were based on the following:

- 60% for artistic excellence and creativity of the Proposal as presented;
- 20% for integration of the artwork to the community;
- 10% for relationship of the artwork to the station;

- 10% for the completeness of response to requested items in the submission requirements; and
- The proposed art concept's durability, maintainability and resistance to vandalism evaluated as a pass or fail based on technical review.

It was predetermined that the proponent that achieved the highest overall score as determined by the evaluation jury and approved by the Board would then be notified and required to present the proposed art concept to the local community at a public meeting organized by the TTC.

The jury assessed the art concepts based on selection criteria to ensure the art would inspire commuters, symbolize the character of the surrounding neighbourhood and represent the TTC's dedication to service excellence.

The following is a description of the art concept selected for Keele Station. Refer to Appendix B for renderings of the concept:

Keele Station

- Jordan Stook Studios in collaboration with George Foussias – *Transcendence*.
- *Transcendence* is a larger-than-life abstract beanstalk sculpture inspired from a place of child-like wonder and roots itself in fantasy from the childhood literary classic *Jack and the Beanstalk*.
- The art draws directly from the ethos of the area, encapsulating elements of growth, natural environment and community and functioning as a beacon for the community to come together and celebrate each other and the city's rich heritage and culture.
- Towering amidst the urban landscape, the sculpture serves as an icon of hope urging residents to connect with the natural world in the heart of the city.

The proposal submitted by Jordan Sook received the highest overall score and is recommended for award of a contract in the fixed fee amount of \$190,000, including HST.

The selected artist for Keele Station will be notified following the Board's approval and a public open house will be held to present the art concept, including briefings with the local Councillor.

Contact

John Dimovski, Chief Project Manager – Construction
416-521-5204
john.dimovski@ttc.ca

Signature

Gary Downie
Chief Capital Officer

Attachments

Appendix A – TTC Policy 2.1.0 Art in Public Transit Facilities
Appendix B – Presentation of the selected Art Concepts

03050-108-167



Toronto Transit Commission

2.1.0 Art in Public Transit Facilities

1.0 RESPONSIBILITY

Chief Capital Officer

2.0 PURPOSE

The purpose of this policy is to ensure that art is an integral component of the design for public areas of transit facilities, wherever possible, and that the artwork selected is suitable for its intended location.

3.0 DEFINITIONS

3.1 Public art is that which exists in the public space of TTC station facilities and includes all works that are commissioned, purchased, or donated. Art may be fully integrated or stand-alone.

3.2 Temporary displays are for periods of five years or less.

3.3 Integrated art is art which replaces or is integrated into standard facility finishes or fixtures.

3.4 Stand-alone art is that which is not integrated as station finishes, which is movable, and which may require a designated area or permanent display case for its protection and mounting. All art which is located externally to a station will be considered stand-alone art.

3.5 Public areas are defined as those areas to which the general public has access, and for the purpose of associated cost (see 5.1) includes all new structure, services, and finish required to form the space as an entity.

4.0 APPROVAL PROCESS

4.1 The Board will approve the proposed work and its location for the installation of any artwork or artifact in a public transit facility.

4.2 Prior to Board approval, each proposed artwork or artifact will be reviewed for conformance with the technical specifications and general requirements of the TTC design standards.

- 4.3 Prior to Board approval:
 - 4.3.1 Artists of permanent installations shall be selected using an open competition process and in conjunction with the City of Toronto's Art Committee for Public Places.
 - 4.3.2 Temporary displays of artwork or artifacts shall not compromise safety and operational standards in public areas.
 - 4.3.3 Donated artwork or artifacts will be reviewed for approval by the City of Toronto's Art Committee for Public Places.
 - 4.3.4 The City of Toronto's Art Committee for Public Places will be involved from the outset with regard to new projects that will involve the integration of art in public transit facilities.
- 4.4 Art selection juries, when convened, will include one member representing the TTC. The subject matter of the artwork or artifacts selected shall be non-offensive and in accordance with general community standards. The artist of each approved artwork must enter into an agreement with the TTC to provide the finished installation, including maintenance manuals.

5.0 INSTALLATION

- 5.1 The standard allowance for public art shall be at least 1% of the overall cost of the public areas of the facility.
- 5.2 The installation of stand-alone art will be in response to gifts, grants, or sponsorship and shall be processed in accordance with Toronto Urban Planning's Percent for Public Art Program.
- 5.3 It is TTC policy to integrate an artist into the design team at the outset of new TTC projects in public transit facilities.

6.0 OWNERSHIP AND INSURANCE

- 6.1 Ownership and the responsibility for insurance, inspection and maintenance of completed stand-alone art (except routine cleaning of station surfaces and display cases) shall be transferred to the City.
- 6.2 Ownership and responsibility for integrated art shall remain with the TTC.

7.0 REMOVAL

Artwork or artifacts may be removed with the Board's approval at any time on the recommendation of staff, subject to consultation with the artist and the Board.

8.0 COST

8.1 The cost of stand-alone artwork or artifacts, including display cases, installation, inspection, maintenance (except routine cleaning of station surfaces and display cases) and removal costs, as well as associated staff time, will not be borne by the TTC, except as noted in 8.2, unless such cost is approved by the Board.

8.2 The cost of integrated art is included in the project budgets of the Capital Program, which is approved by the City. When stand-alone installations are included in new facility construction, any required display cases or structural supports will be incorporated into the facility design and included in the integrated art budget for the project.

8.3 For artwork or artifact costs not covered by the City, funding may be canvassed through grants or from private sources or a combination of public and private funds.

8.4 Where art is installed that will likely require future maintenance or conservation, which is beyond the expectation of normal operating maintenance, an amount not less than 10% of the art budget shall be included in the project budget, and shall be deposited with the City for that purpose.

9.0 TEMPORARY DISPLAYS - COMMUNITY GROUPS AND SCHOOLS

9.1 Temporary display of artwork in permanent display cases included at existing subway stations or any future subway station installations, will be the responsibility of the Head of the Marketing and Customer Experience Department.

9.2 Temporary displays of community art shall be for short periods of time, not exceeding five years in duration.

9.3 Community art is not subject to approval by the City of Toronto's Art Committee for Public Places, unless recommended by staff. All such art shall be approved by the Chief Strategy and Customer Experience Officer.

10.0 REFERENCE SOURCES

- Toronto Urban Design – Percent for Public Art Program Guidelines
- TTC Design Manual

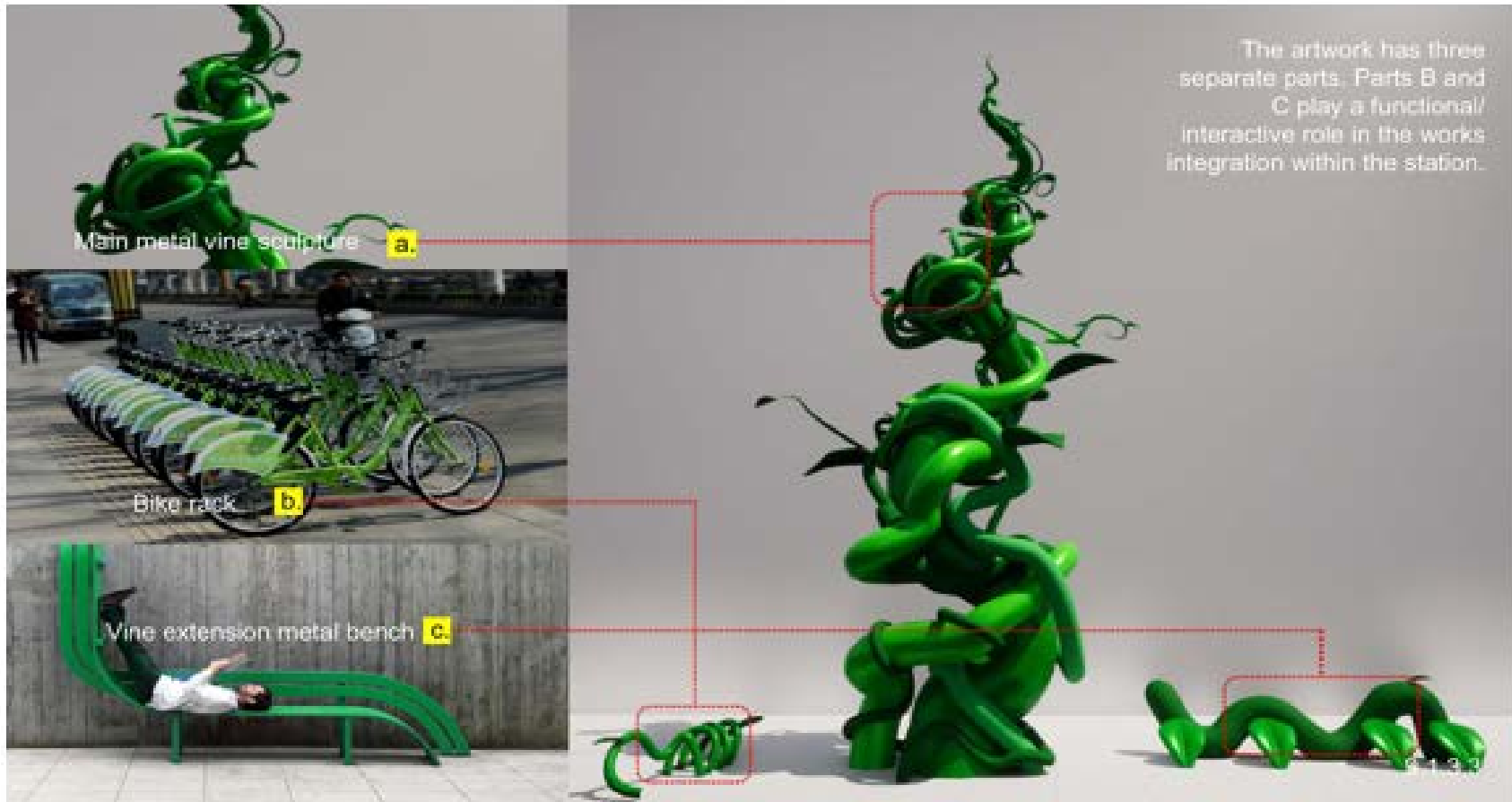
© Copyright 2024 Toronto Transit Commission. Unauthorized duplication or use prohibited.



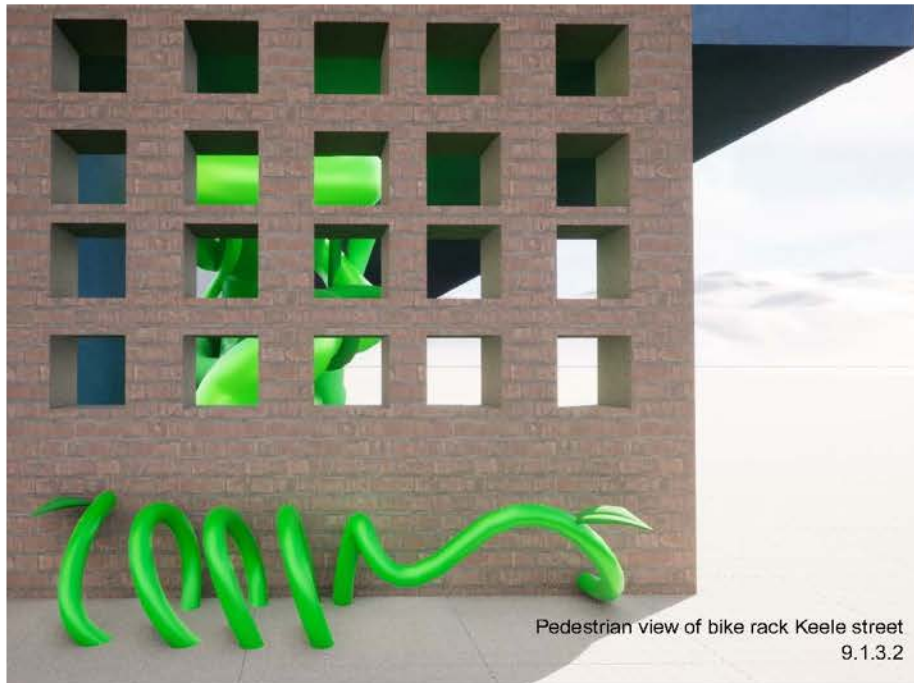
Appendix B

Approval of Public Art Concept for Keele Station

Keele Station

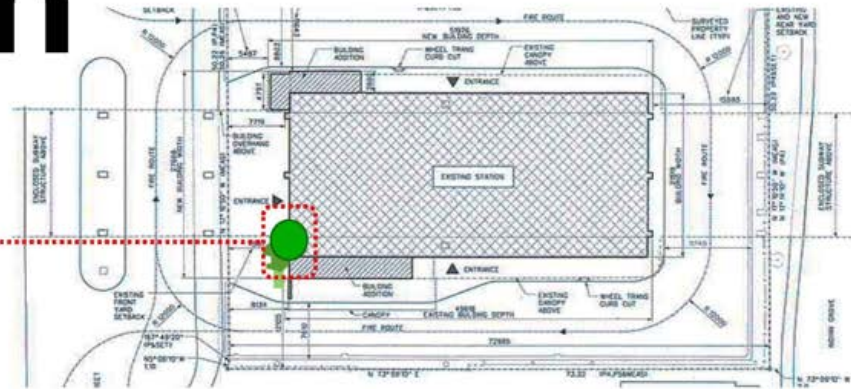


| Keele Station



Keele Station

site plan



Location of art adjacent to bike parking

Top of art 8'-0" above roof

Above reach level 10'-0" above ground

Non-climbable lower sculpture area

Ground level



9.1.3.1