



# **Old Mill Station Easier Access Project**

Pre-Construction Presentation

November 21, 2024

# Status of Easier Access Program



- **57 out of 70** subway stations are accessible with new elevators.
- **12** stations are under construction, including College, Summerhill, Rosedale, Lawrence, Greenwood, High Park, Christie, Museum, King, Warden, Spadina and Islington.
- Construction at Old Mill Station is expected to start as early as Q1/Q2 2025\*.

*\* Subject to change due to unforeseen conditions.*

# Nearby Stations – Accessibility Schedule



*\*Subject to change due to unforeseen conditions.*



# Advisory Committee on Accessible Transit (ACAT)



## ACAT Overview

- ACAT consists of 15 volunteer committee members who are appointed by the TTC Board and advise the TTC on accessibility-related initiatives.

## ACAT's Role

- Represents the needs and concerns of persons with disabilities and seniors who use public transit services provided by the TTC.
- Advises the TTC on the provision of accessible public transit.
- Advises the TTC on necessary policy issues for services that pertain to the interests of persons with disabilities and seniors.
- Supports TTC staff in consulting, educating, and advising persons with disabilities, seniors, and the community at large.
- Subcommittees: Design Review, Service Planning, Communications, Wheel-Trans Operations.
- Advises the TTC on priority and plans for Easier Access projects.



# Old Mill Station - Easier Access Improvements

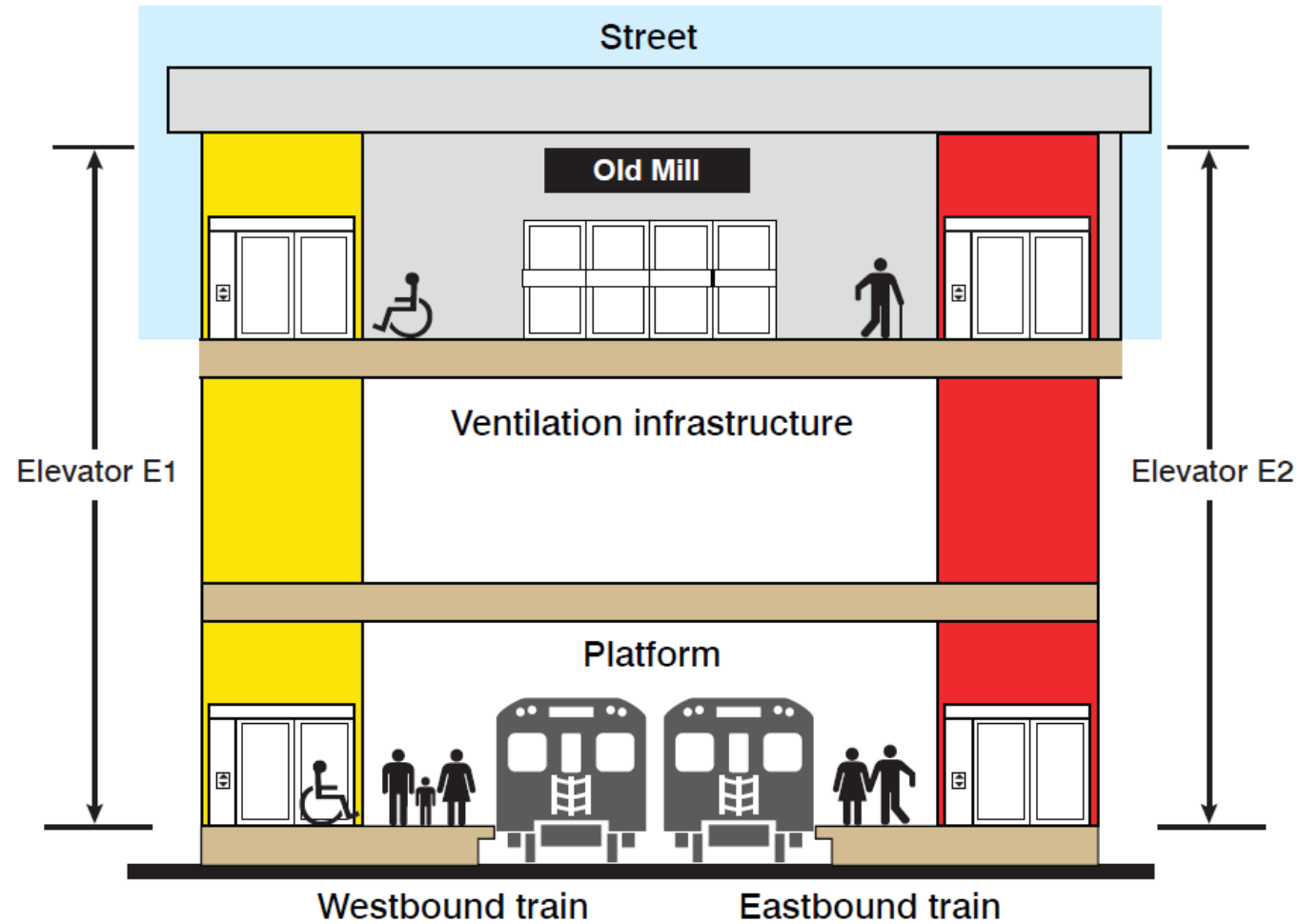
**TTC will make Old Mill Station accessible with new elevators. This work will include:**

- Installing two elevators to provide a barrier-free pathway from the street level to the eastbound and westbound platforms
- Improving signage throughout the station
- Repairing finishes and installing tactile attention tiles
- Installing CCTV security cameras along the accessible pathway

The Easier Access improvements are reviewed by the Advisory Committee on Accessible Transit (ACAT).



# Cross-section Image of Elevators at Old Mill Station



# Old Mill Station – Elevators Site Plan

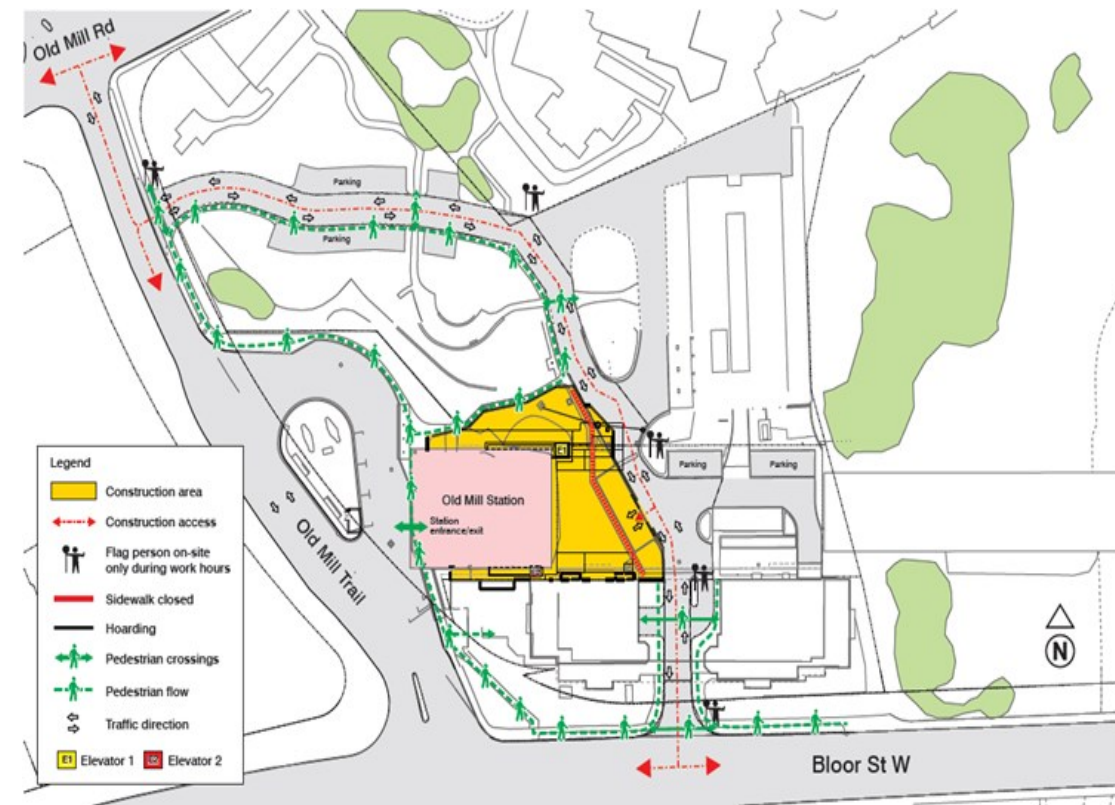


**E1** – Elevator for the street level to the westbound platform level.

**E2** – Elevator for the street level to the eastbound platform level.



# Old Mill Station – Main Construction Area for Elevators (E1 and E2 adjacent to 2662 Bloor Street West)



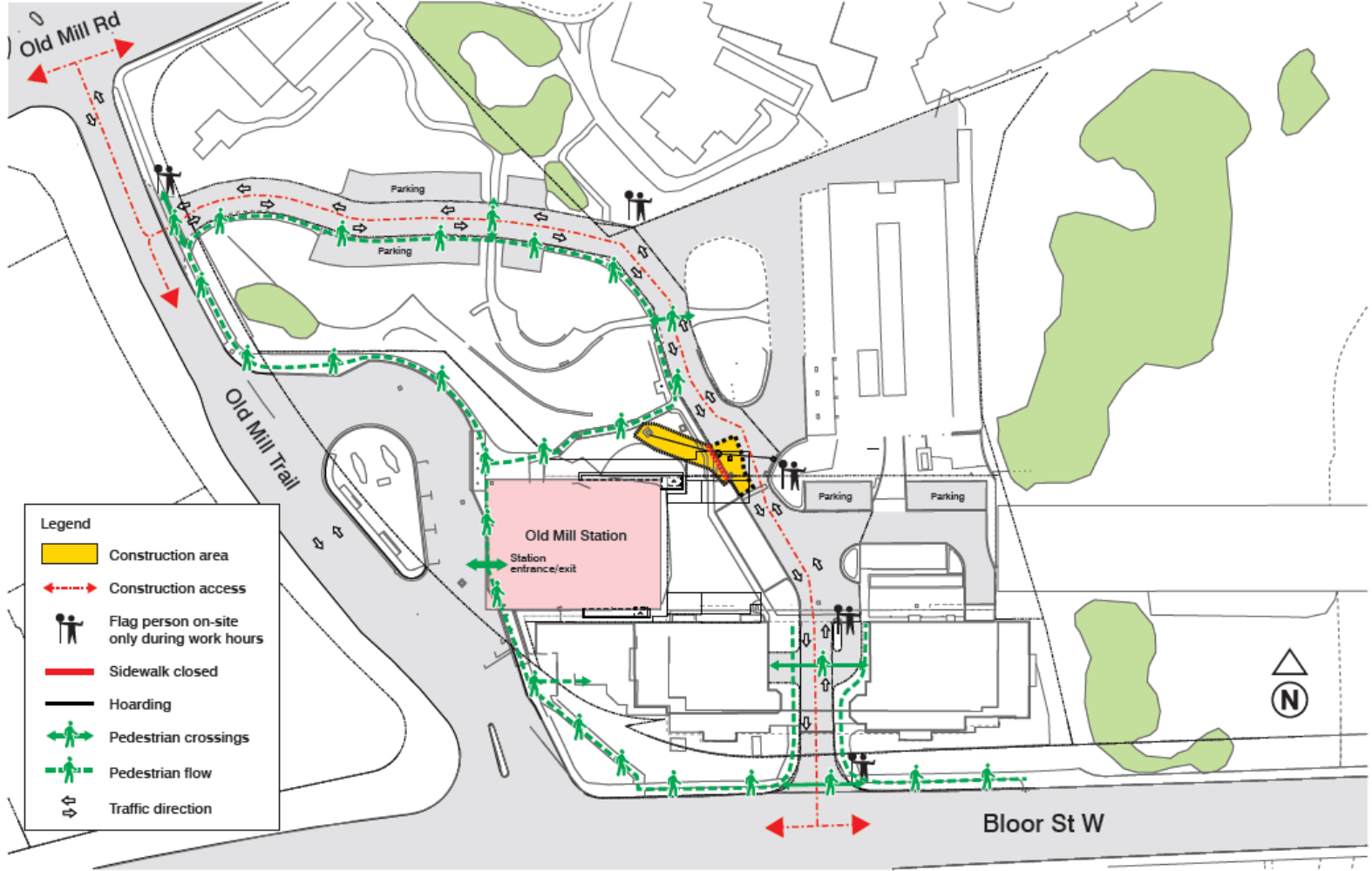


# | Old Mill Station – Conceptual Staging Plans

- The following slides include conceptual staging plans - provided for illustrative purposes only.
- **Plans are subject to change** as information and the construction planning is finalized by the contractor and later approved by the City of Toronto, Transportation Services.



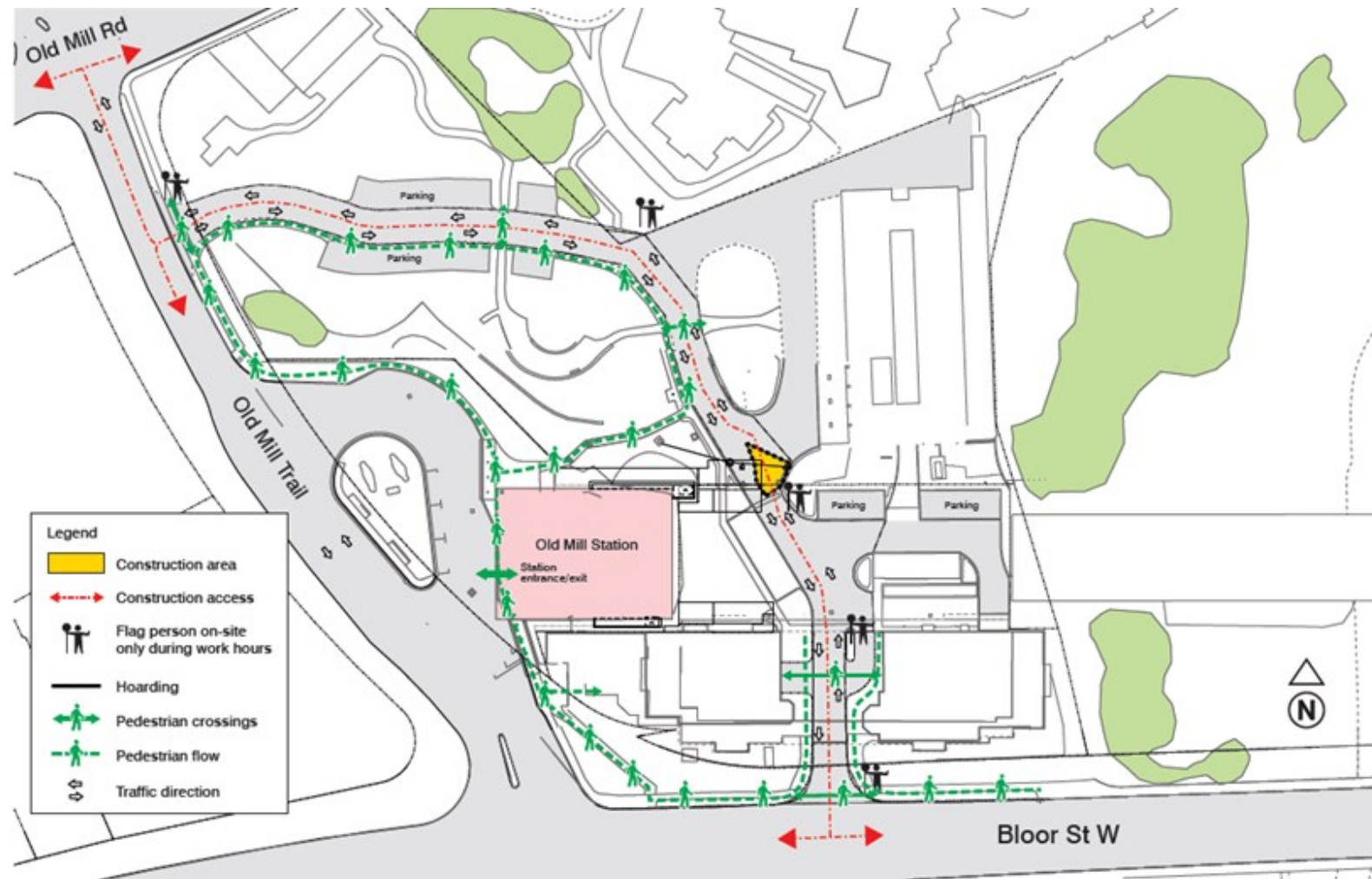
# Old Mill Station – Conceptual Construction Stage 1



Plans are subject to change

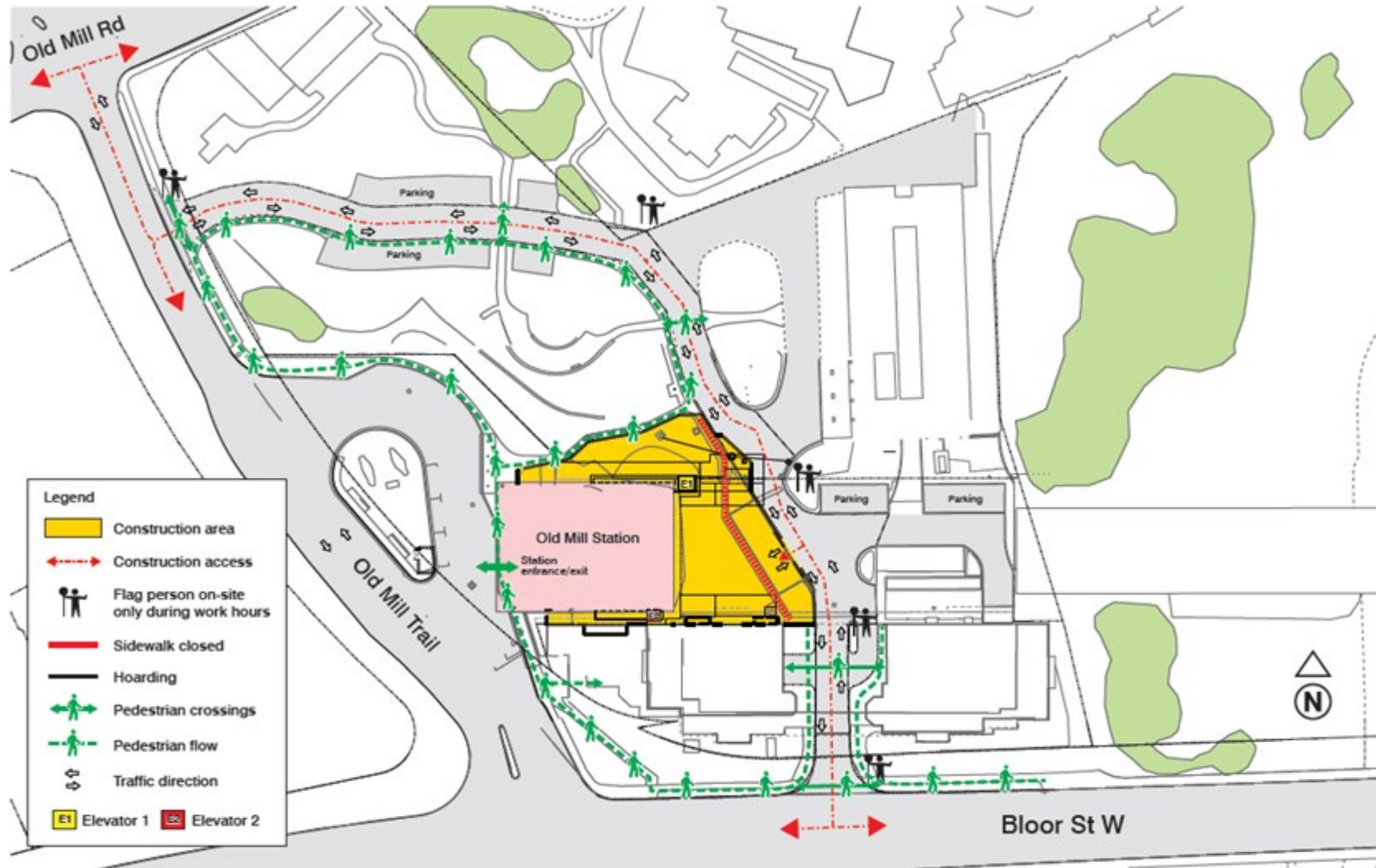


# Old Mill Station – Conceptual Construction Stage 2



Plans are subject to change

# Old Mill Station – Conceptual Construction Stage 3

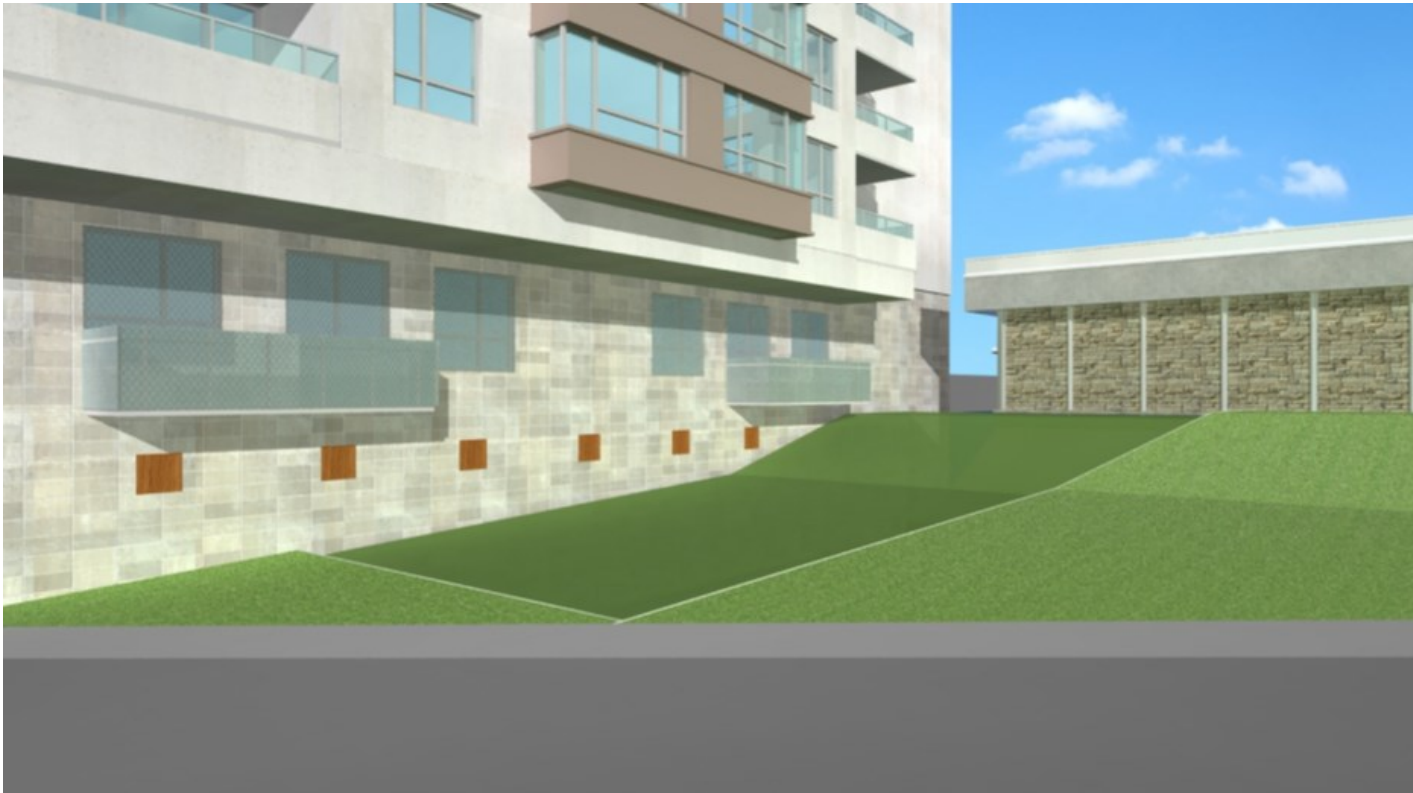


Plans are subject to change





# Old Mill Station – Conceptual Construction Phasing for E2

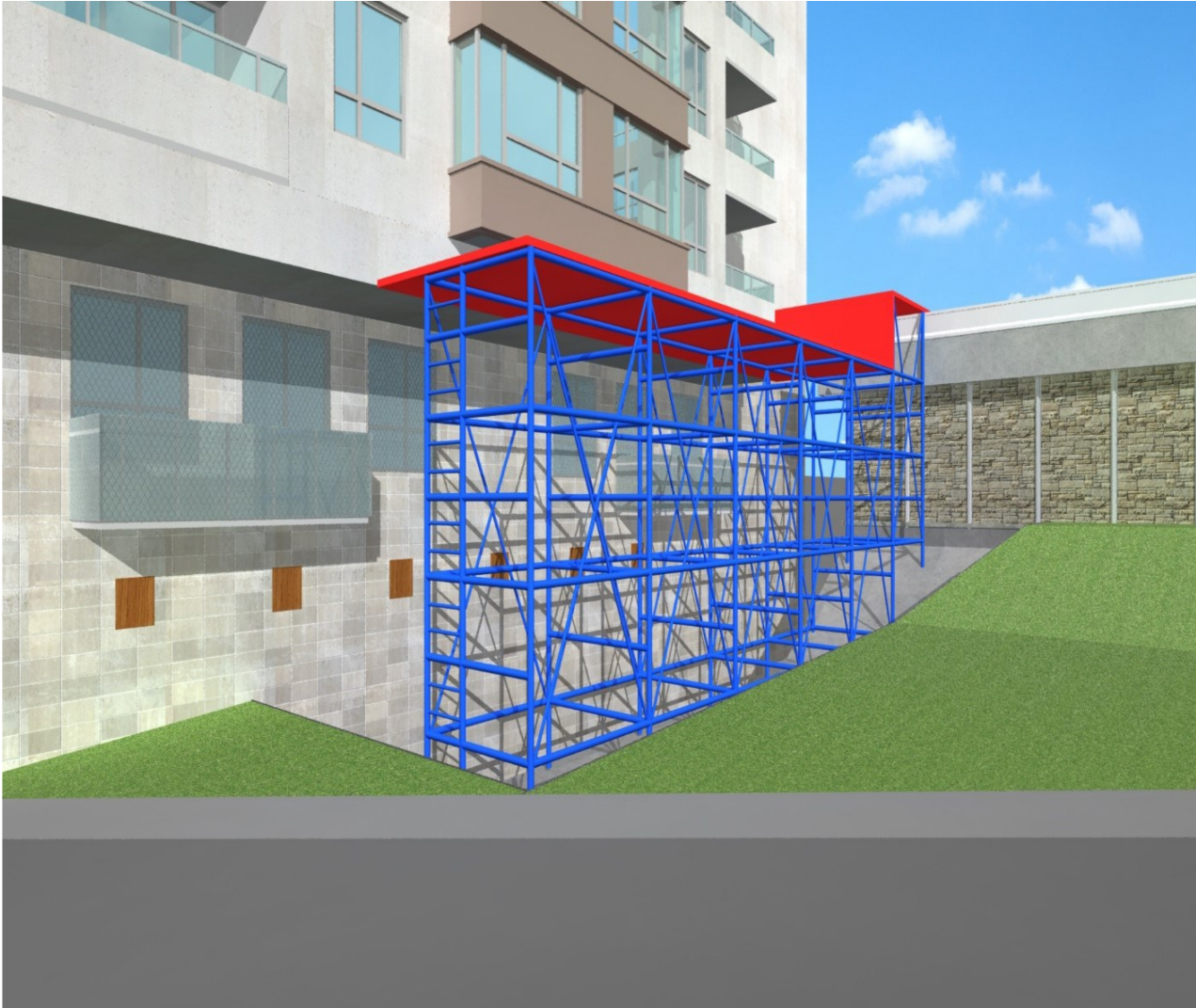


## Phase 1

- Protective barriers will be installed to shield and protect the balcony guardrails.
- Landscaping and trees (in the construction zone) will be removed.

Note: The dark green area is approximately the future construction zone for E2; protective hoarding will be in place to separate the construction zone from the road.

# Old Mill Station – Conceptual Construction Phasing for E2



## Phase 2:

- Soil removal will occur.
- Scaffolding will be installed to deflect the noise away from the building (as shown in blue and red).
- Protective transparent vinyl (as shown in the grey hatch) sheets will be installed (upon request by the unit owner) as an acoustic barrier on first-floor unit windows and doors (as shown) to reduce the noise. It offers significant noise reduction while allowing for visibility. Windows will not be operable.
- Bedrock chipping and removal will take place\*.

\*Currently *estimated* for a minimum of 2 months. Phase timeline to be updated when the contract is awarded.





# Old Mill Station – Conceptual Construction Phasing for E2



## Phase 3:

- Scaffolding will be removed.
- Acoustic barrier for windows and doors (if requested by the unit owner) prior to concrete placement will be removed.
- Construction of the elevator's structure will commence.

# Old Mill Station – Conceptual Construction Phasing for E2



## Phase 4:

- Construction zone, road, and landscaping will be restored.
- Protective barriers will be removed from balconies.
- Work will continue inside the station to complete the Easier Access project.



# | E1 Elevator Rendering – Street Level Corridor Image 1



*Note: Finishes shown are for presentation purposes and are subject to change.*

# | E1 Elevator Rendering – Street Level Corridor Image 2



*Note: Finishes shown are for presentation purposes and are subject to change.*



# | E1 Elevator Rendering – North Elevation



*Note: Finishes shown are for presentation purposes and are subject to change.*

# Construction Details and Transit Information

- The majority of work will take place between 7:00 a.m. and 7:00 p.m., as required.
- As permitted, some overnight and weekend work will be required during the course of this project for safety and efficiency.
- Noise, dust, and vibration associated with construction are unavoidable with this work.
- Mitigation measures, such as vibration monitoring, and mesh fencing (to reduce dust) will be implemented.
- Construction trucks, equipment, and workers will be present in the area. Road access will be shared with construction vehicles, as required throughout the project.
- In order to safely separate the construction area from the road, hoarding will be in place, and trees will be removed.
- The visitor parking spots at 2662 Bloor Street West within the construction zone, will not be available throughout construction. The visitor parking spots outside the construction zone will be available.
- Access to the underground parking garages at 39 Old Mill Road and 2662 Bloor Street West will be maintained throughout construction.
- The pedestrian pathway from 39 Old Mill Road leading to Old Mill Station will remain open. The sidewalk within the construction area at 2662 Bloor Street West will be closed.
- Access to Old Mill Station will be maintained for customers throughout construction.
- Construction vehicles will access the Old Mill Easier Access construction site from Old Mill Trail and Bloor Street West via Breezeway.





# | Contact

**Jorida Malevi**  
Community and Stakeholder Relations  
[Jorida.Malevi@ttc.ca](mailto:Jorida.Malevi@ttc.ca)



