



King Station Easier Access Project

Pre-Construction Community Update

April, 2022



Covid-19

- Due to Covid-19 and current provincial guidance on public gatherings, a pre-construction overview will be posted online in lieu of a public meeting.

Status of Easier Access program



- 55 stations are now accessible.
- Elevators at Keele, Sherbourne and Yorkdale stations are in service.
- Easier access work continues at the following stations:
 - Castle Frank, College, Donlands, Dupont, Glencairn, Greenwood, Lansdowne, Rosedale, and Summerhill.
- In 2022, the TTC is scheduled to begin Easier Access construction at the following stations:
 - Christie, High Park, **King**, Lawrence, Museum, Old Mill, Spadina and Warden (concourse and platform elevators only).

Advisory Committee on Accessible Transit (ACAT)



ACAT Overview

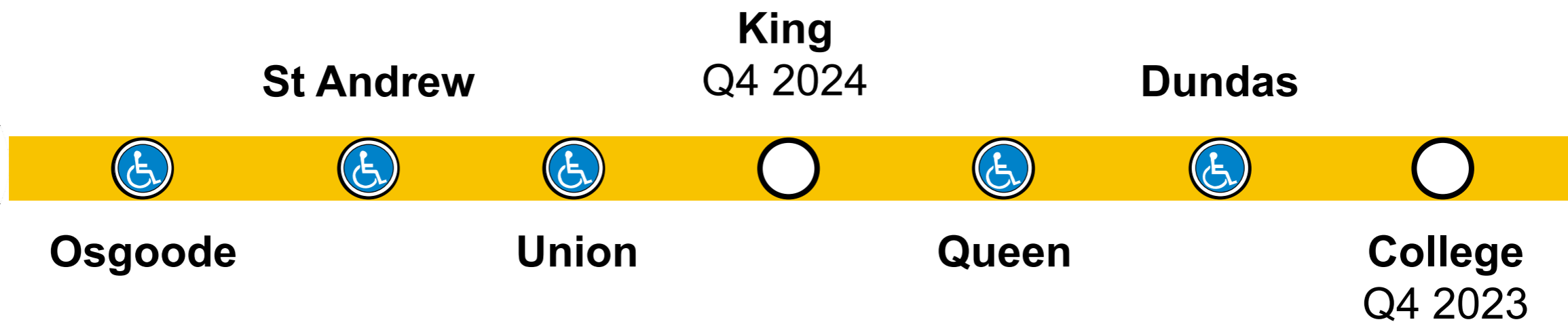
- Toronto citizens who advise the TTC on difficulties faced by people with disabilities and seniors.
- Recommends the elimination of barriers to accessible public transit in the City of Toronto.
- ACAT consists of 16 volunteer committee members who are appointed by the TTC Board.

ACAT's Role

- Represents the needs and concerns of persons with disabilities and seniors who use public transit services provided by the TTC.
- Advises the TTC on the provision of accessible public transit.
- Advises the TTC on necessary policy issues for services that pertain to the interests of persons with disabilities and seniors.
- Supports TTC staff in consulting, educating and advising persons with disabilities, seniors and the community at large.
- Subcommittees: Design Review, Service Planning, Communications, Wheel-Trans Operations.
- Advises the TTC on priority and plans for Easier Access projects.

Nearby stations – accessibility schedule

1



Project overview

The TTC's Easier Access Program is making subway stations accessible. Construction at King Station is projected to begin in Summer of 2022.

This work will include a barrier-free path from Commerce Court to all levels of the station including:

- Three forward motion elevators connecting Commerce Court concourse level and both subway platforms
- Accessible doors at Commerce Court entrance.
- Presto fare gates including two wide access gates at concourse level
- Improved signage
- Public Art

| Project overview

The construction will impact the following areas:

Melinda Street: construction of E1 & E2 at different stages

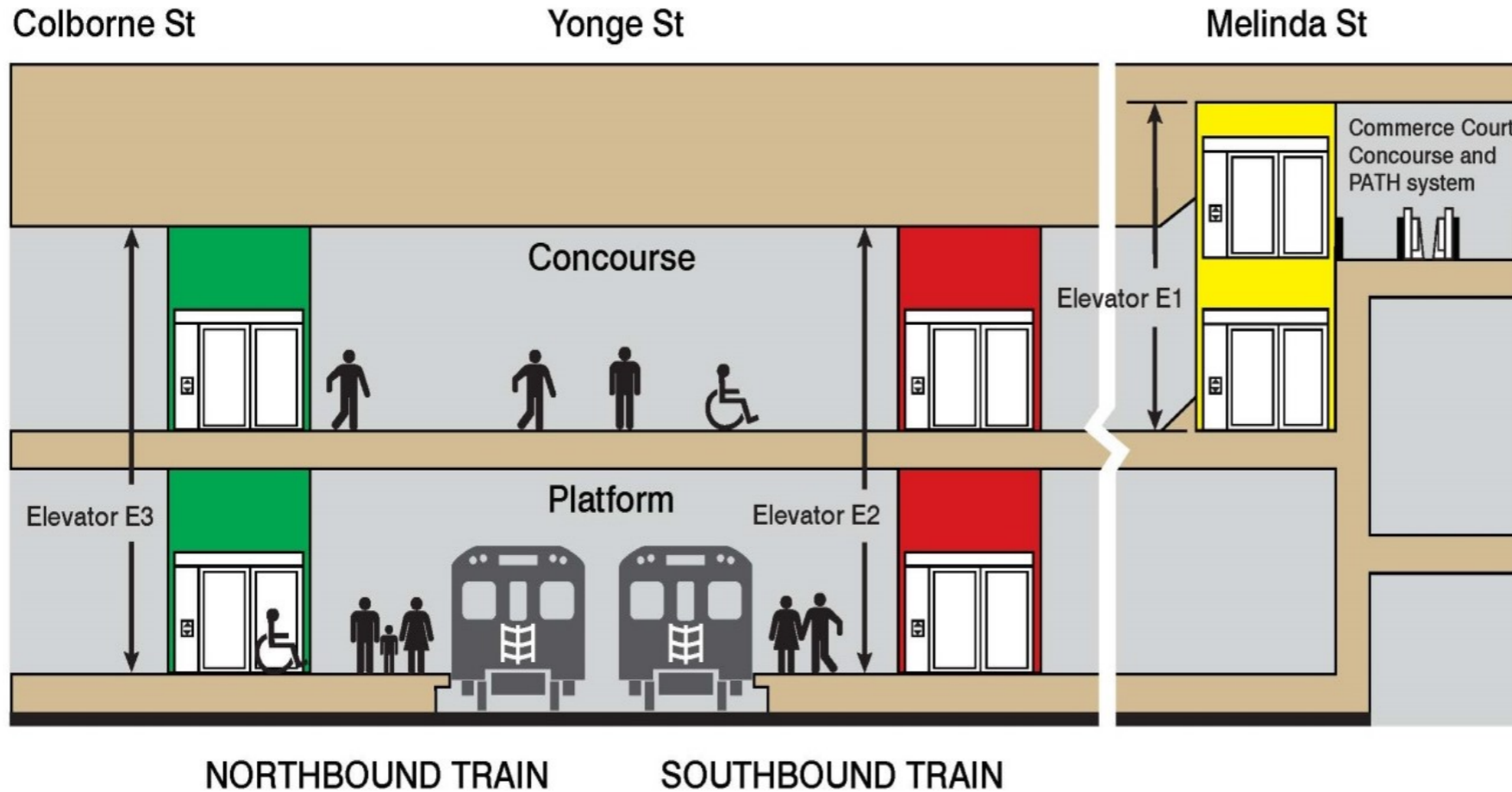
Yonge and Colborne Streets Intersection: construction of E3 will take place simultaneously with construction of the other two elevators

| King Station - Schedule

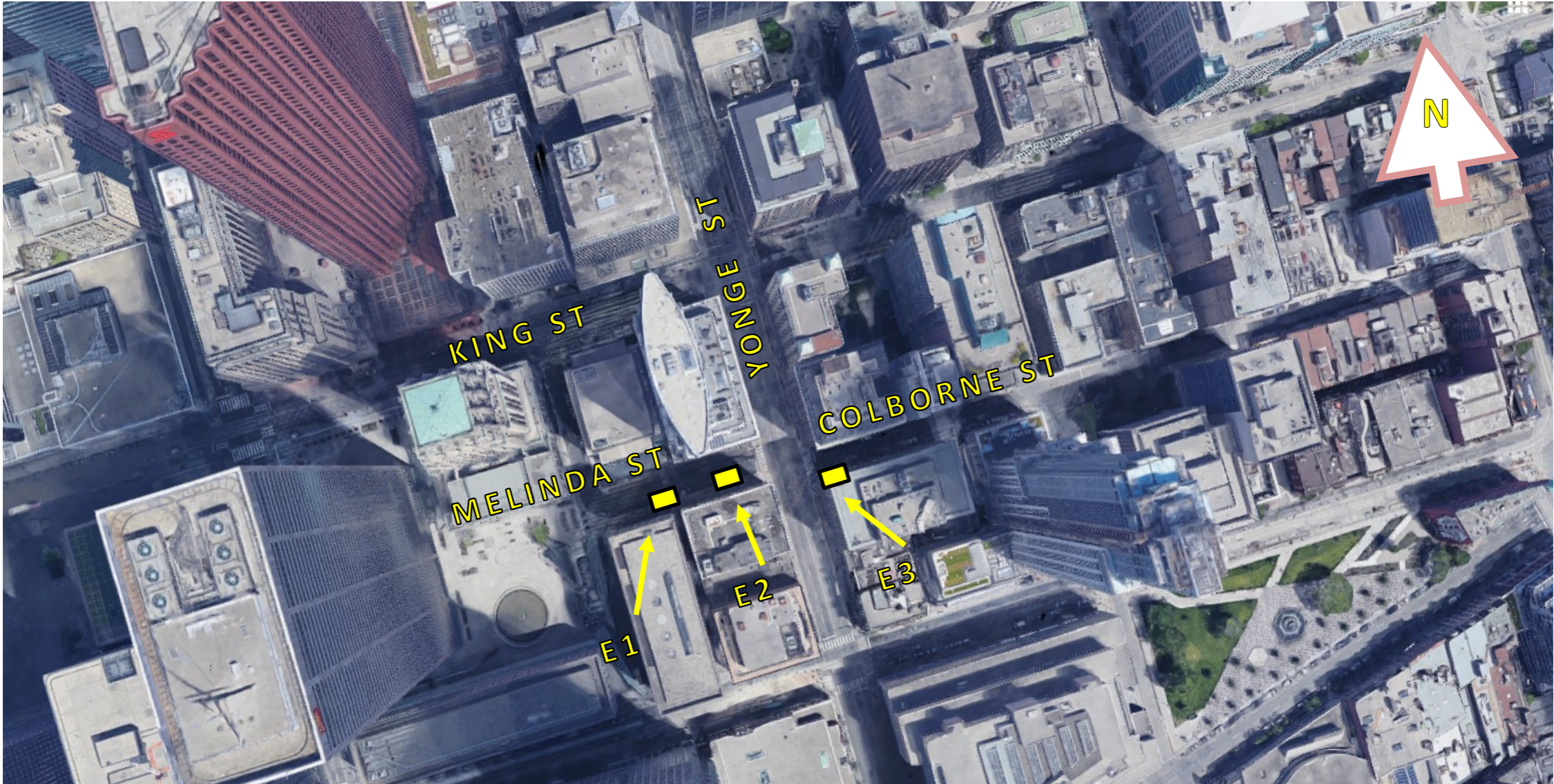
- April, 2022 Pre-construction community update
- Summer, 2022 Contract Award
- Summer, 2022 Construction starts
- Q4 2024 Complete construction



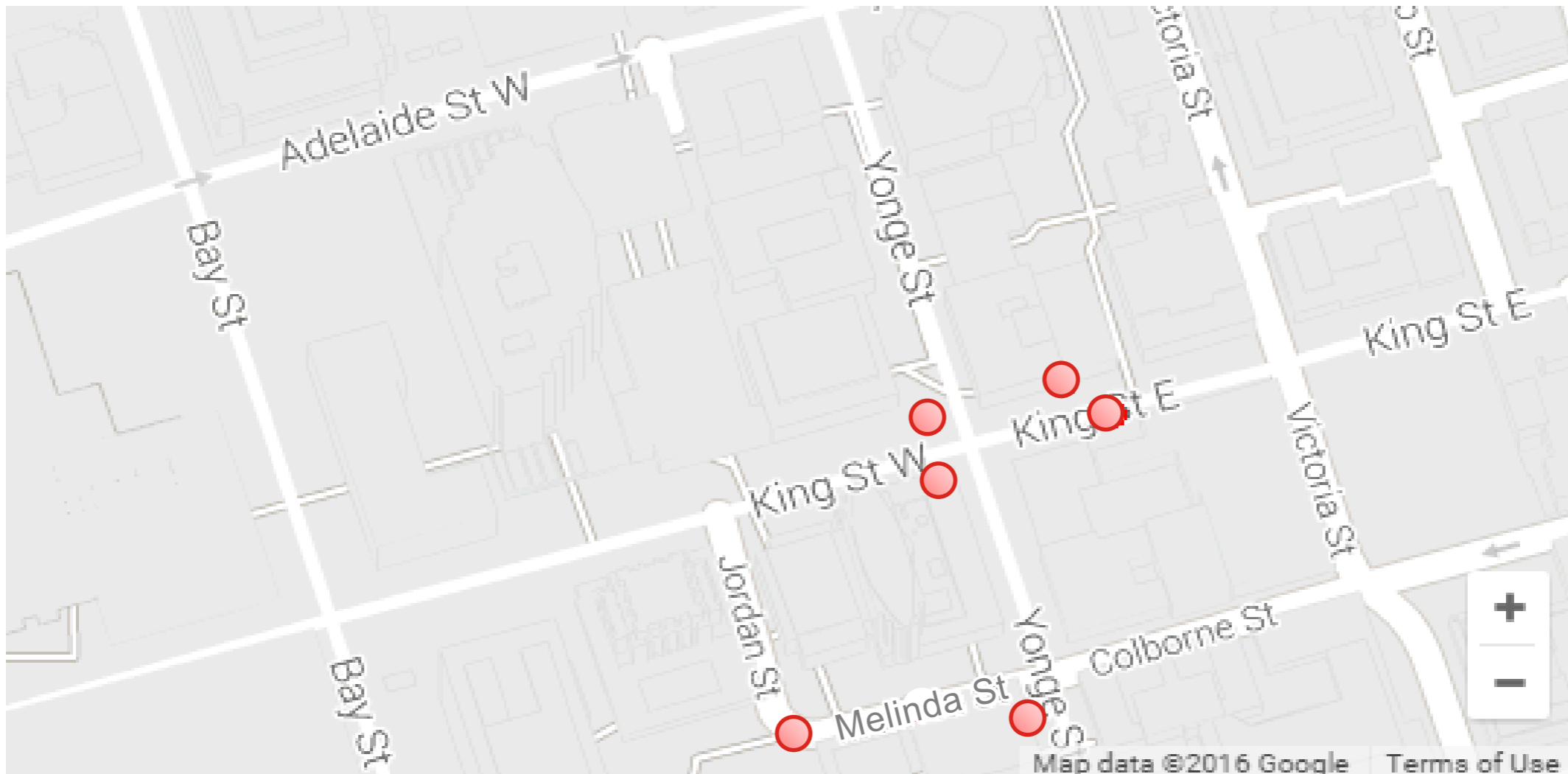
King Station elevator cross section



King Station elevator site plan



King Station entrances



| Traffic management overview

- Yonge Street, at the intersection of Melinda and Colborne, will be one lane in each direction and will be maintained at all times
- Traffic at Yonge and Colborne will be affected by utility work and elevator installation
- Colborne Street – a partial closure is expected
- Melinda Street - partial and full closures are expected
- Construction traffic on Melinda and Colborne St is anticipated throughout the construction period including delivery trucks and equipment
- Through-traffic on the TTC King streetcar and subway service will be maintained

| Pedestrian access during construction

- Pedestrian detours and signage will be in place, closures and/or restrictions on the stairs leading to Commerce Court while E1 is being constructed
- Pedestrian access to stores and the PATH in Commerce Court will be maintained at all times
- Pedestrian access at street level will be partially restricted during different stages of construction



Hotel and Business access during construction

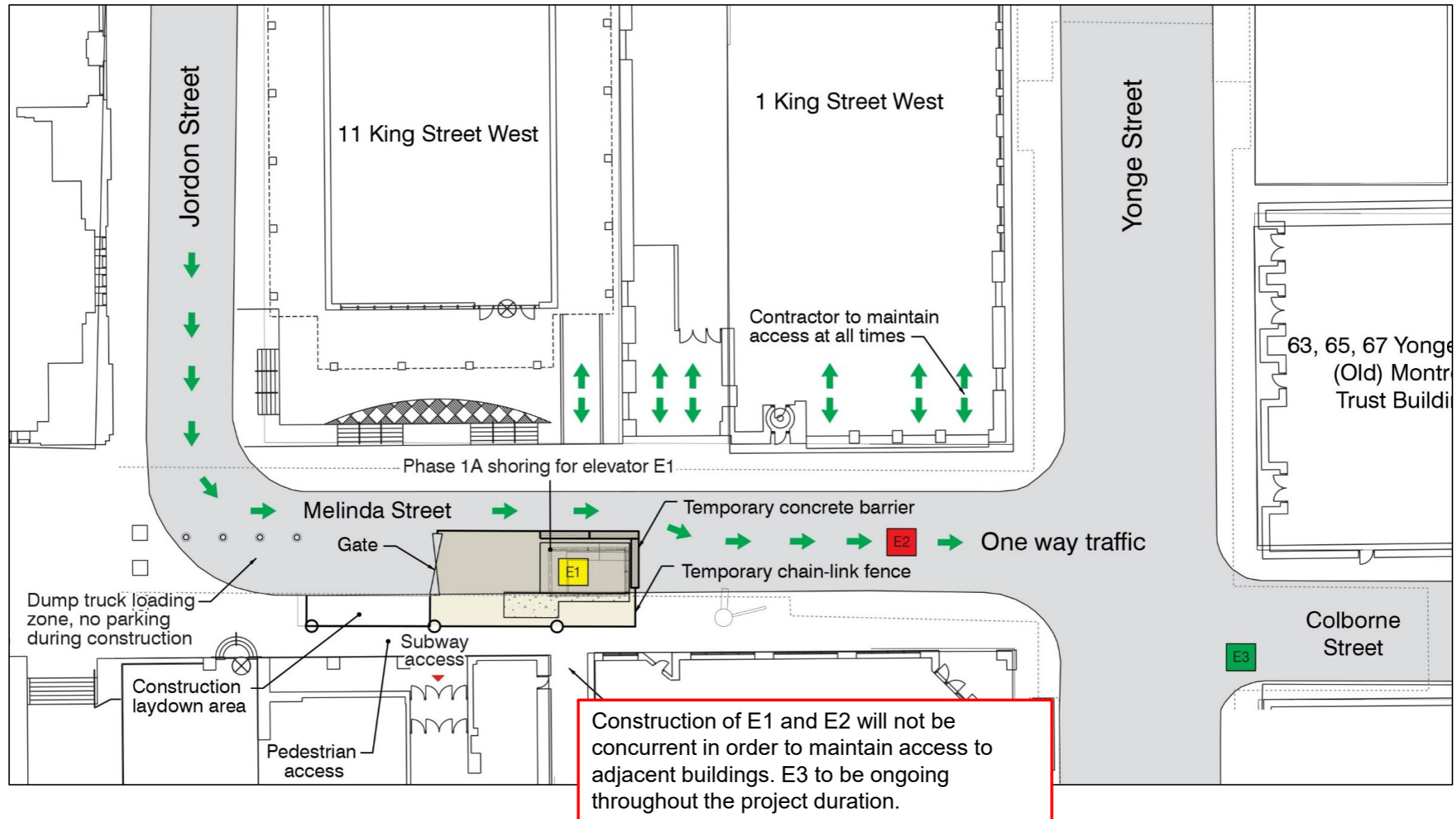
- Access to Cosmopolitan Hotel street entrance on Colborne Street will be maintained at all times
- Access to One King West entrance will be maintained on Melinda Street, however there will be some temporary restrictions
- Access to all businesses within the construction area will be maintained at all times



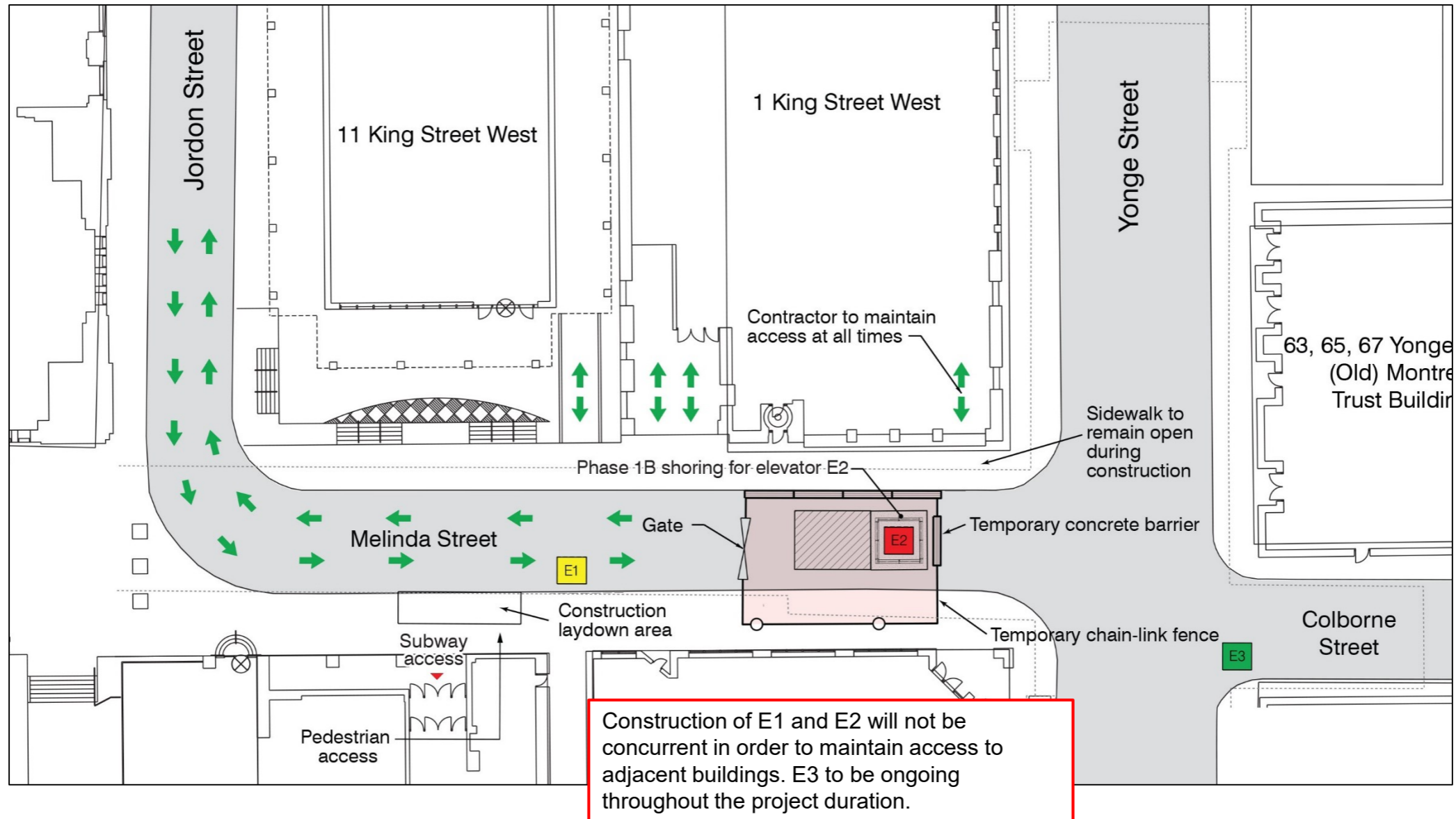
Conceptual staging plans

- The following slides include conceptual staging plans - provided for illustrative purposes only.
- **Plans are subject to change** as information and the construction planning is finalized by the contractor and the City of Toronto.
- Some phases may be combined or modified depending on site conditions and permits.

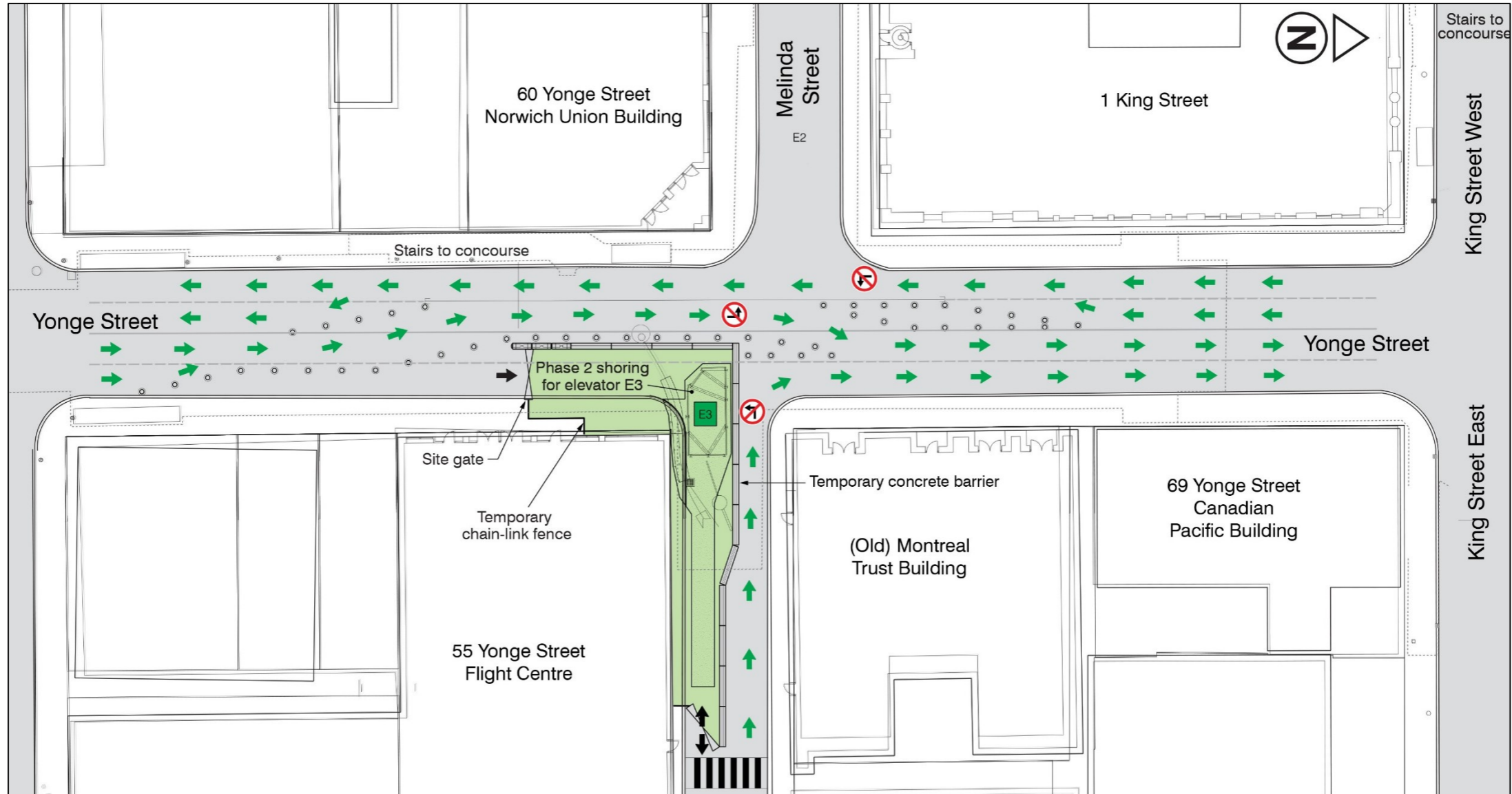
Traffic Management Plan Phase 1A (approx. 7 months)



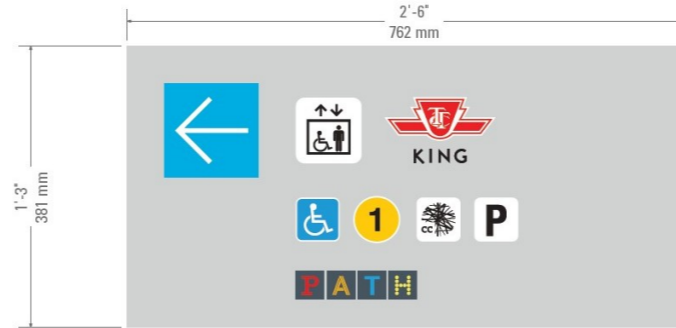
Traffic Management Plan Phase 1B (approx. 11 months)



Traffic Management Plan Phase 2C (approx. 13 months)



Wayfinding Signage



Side A



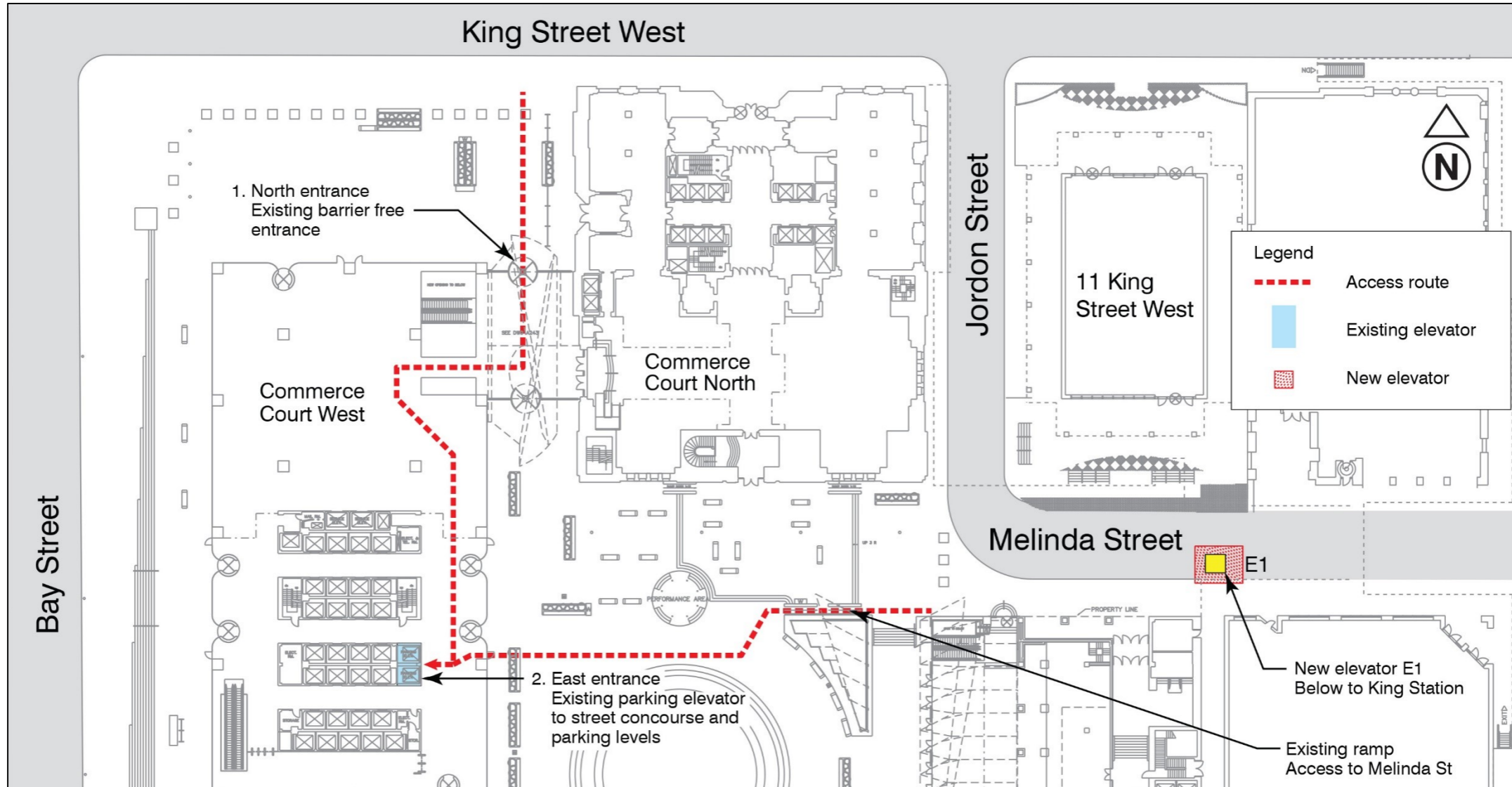
Side B



Scale 1:5 (TTC Sign - D17)

New wayfinding signage will be added at all entrances to Commerce Court and along the accessible pathway leading to the subway entrance.

Path at street level to new elevator (E1)



Combined path through commerce court food court



- Existing Concourse/PATH towards TTC King Station subway entrance

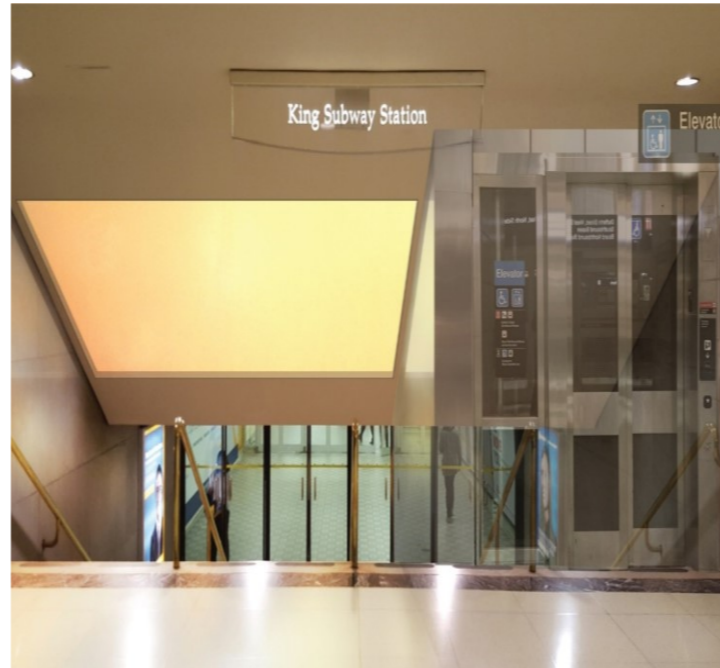


- New TTC elevator (E1) will be located on the right hand side of the stairs to access King Station

| King Station public art

- King Station will receive public art in accordance with the Public Art Policy
- Sean Martindale was selected to install his art entitled, “Light Canopy”
- Art will be installed at the end of the construction period

Sean Martindale: “Light Canopy”



Light Canopy is an animated lighting system set into the ceiling above the stairwell at King Station’s western entrance. As pedestrians pass under, they will experience the feeling of being under sun dappled trees, with beams reflecting and passing through foliage. The dynamic, animated band of light is made up of an array of programmed LEDs spanning the underside of a diffusing semi-translucent surface. Light Canopy will be programmed to follow natural circadian light cycles. The artwork will be continually changing; a piece that the public will get to experience in new ways each time they see it. – Sean Martindale

Yonge St. King Street and local businesses

- While the project benefits the community in the long-term, we understand that construction can be disruptive and are pleased to work with the BIA (Business Improvement Area) and local businesses to convey the message that businesses are open during construction.
- Area waste collection conducted by the City will continue as per their schedule.

Construction

- The majority of work will take place between 7 a.m. and 7 p.m., as required.
- As permitted, some overnight and weekend work will be required during the course of this project in order to complete the work as quickly as possible.
- Noise, dust and vibration associated with construction is unavoidable with this work but will be kept to a minimum.
- Mitigation measures such as vibration monitoring, and wet cutting of concrete and mesh fencing (to reduce dust) will be implemented.
- Construction trucks, equipment and workers will be present in the general area.
- TTC Community Liaison will provide construction updates, coordinate responses to questions, coordinate meetings with neighbours and the project team.

