



Lawrence Station Easier Access Project

Community Update

April 2022



| Status of Easier Access Program

- 55 stations are now accessible.
- Eight stations are under construction:
 - Lansdowne, Donlands, College, Summerhill, Rosedale, Castle Frank, Glencairn and Greenwood
- Four stations are in the tender phase:
 - Christie, **Lawrence**, Museum and High Park.
- The remaining stations will be made accessible by 2025.



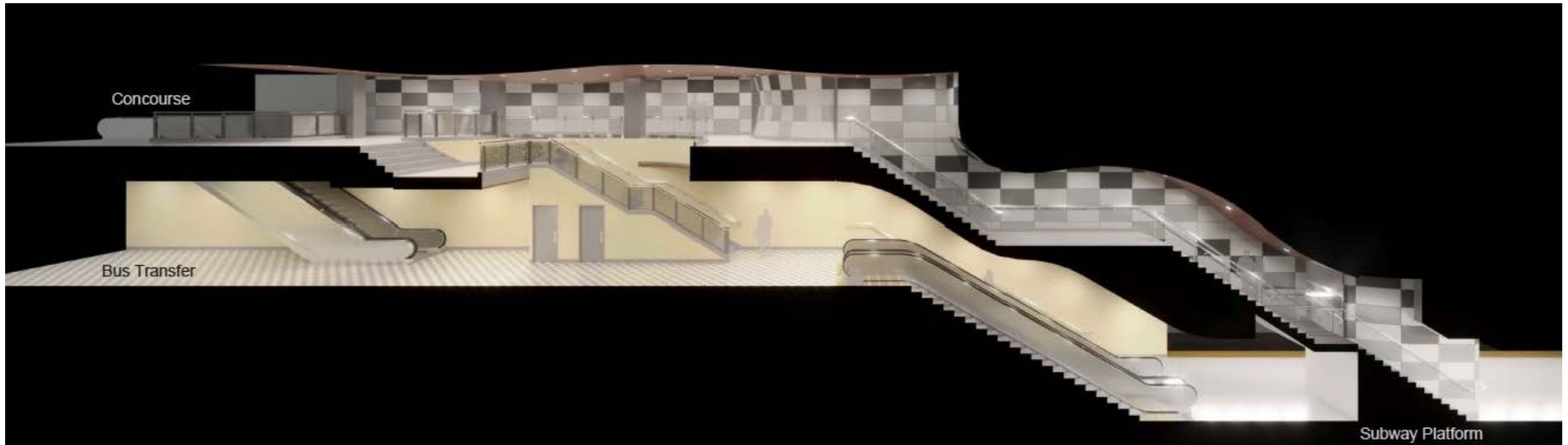
Lawrence Station – Easier Access

Scope

- Two elevators will be installed providing a barrier free path from street level to the platform
- Access from street level provided through 3080 Yonge St (N/W corner of Yonge and Lawrence)
- Construction of new stairs from platform to concourse level
- Installation of barrier-free doors
- Selective repairs to finishes and wayfinding tiles along platform



Lawrence Station – Easier Access Rendering



Note: Finishes shown are for presentation purpose and subject to change

Lawrence Station – Easier Access Rendering



Note: Finishes shown are for presentation purpose and subject to change

Lawrence Station – Easier Access Rendering



Note: Finishes shown are for presentation purpose and subject to change



Lawrence Station – Easier Access Rendering



Note: Finishes shown are for presentation purpose and subject to change



Lawrence Station – Easier Access Rendering



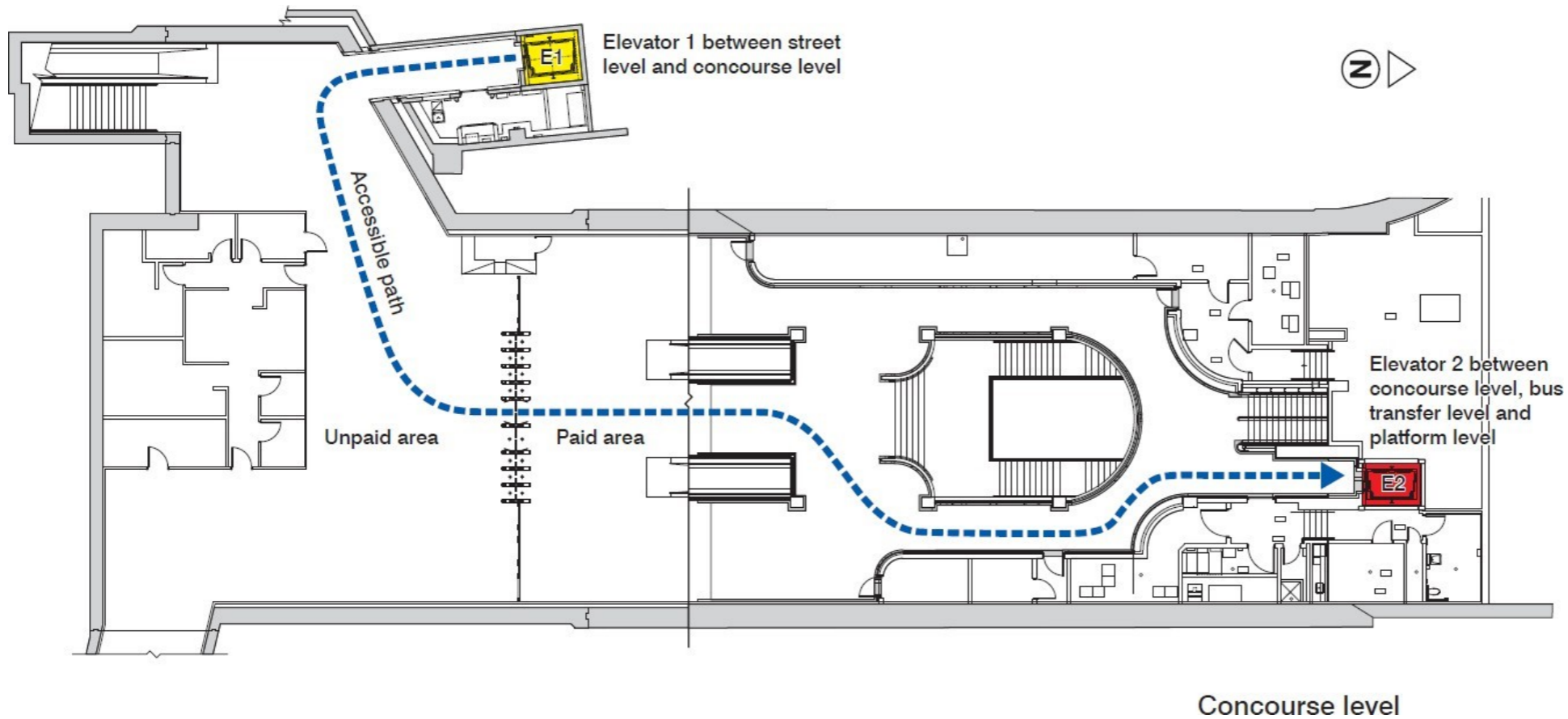
Note: Finishes shown are for presentation purpose and subject to change

Lawrence Station – Easier Access Rendering

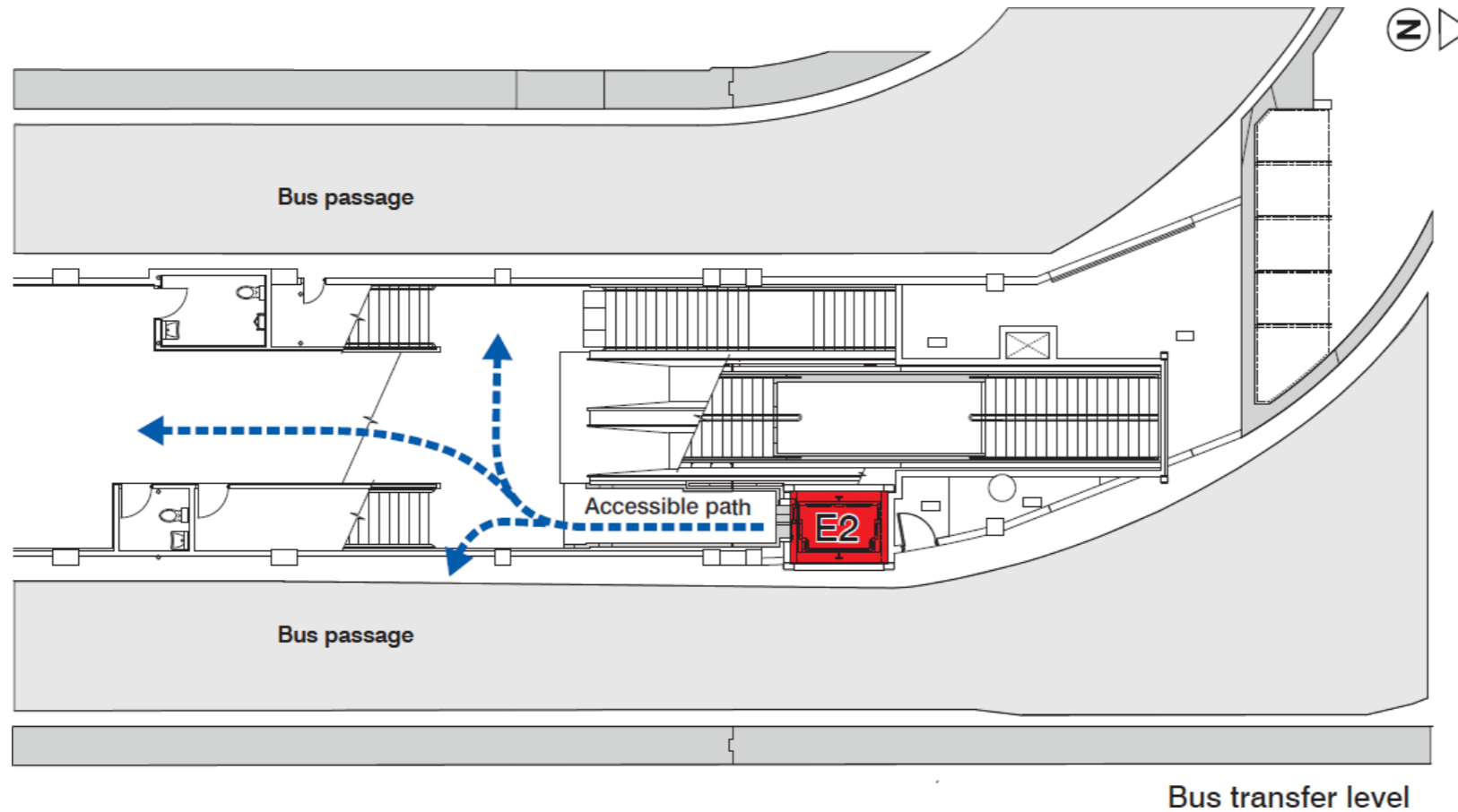


Note: Finishes shown are for presentation purpose and subject to change

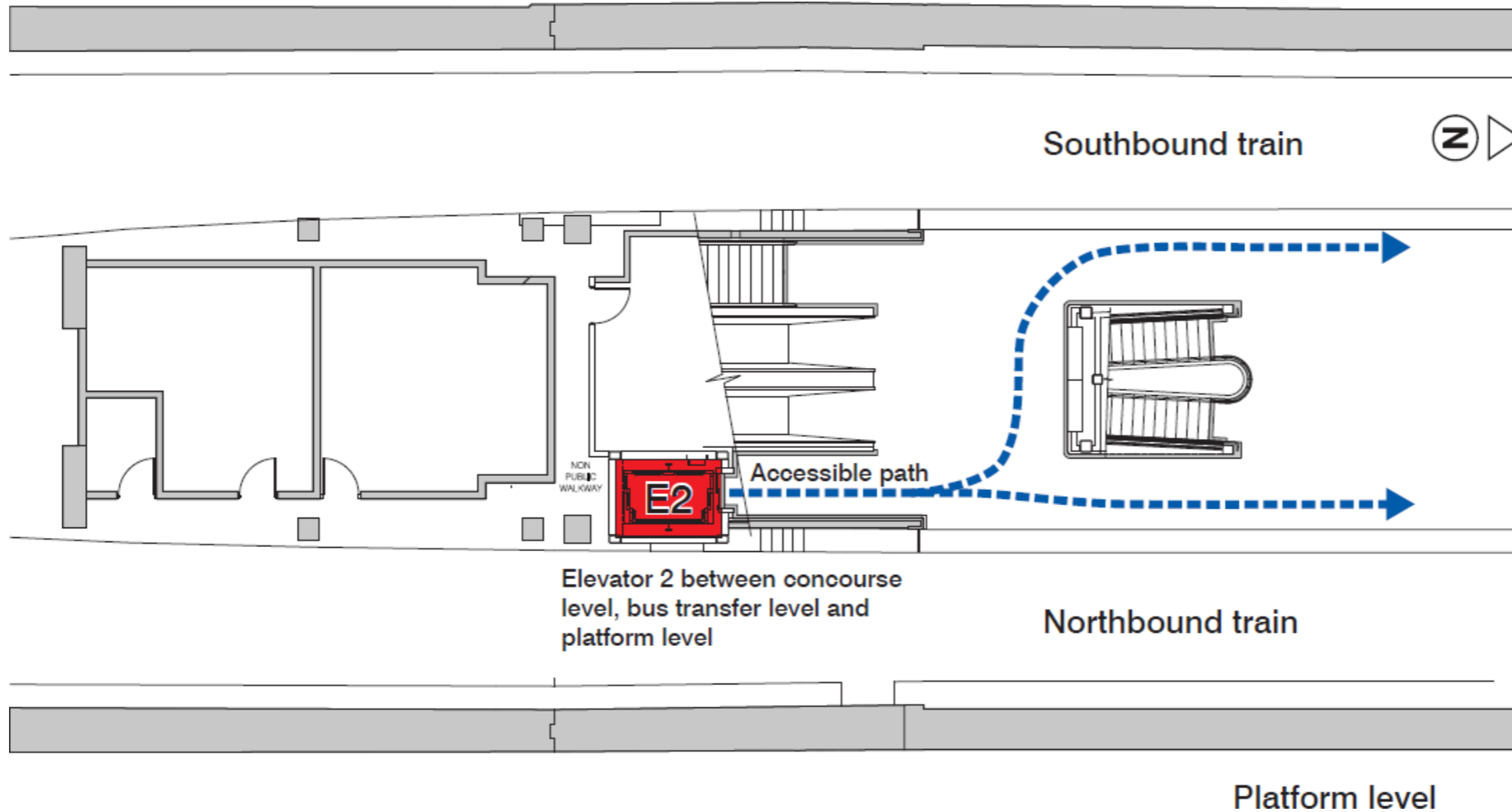
Lawrence Station – Easier Access Accessible Path



Lawrence Station – Easier Access Accessible Path



Lawrence Station – Easier Access Accessible Path



Lawrence Station – Easier Access

Impact and Mitigation

- Main entrances at south end to be closed for approximately eight months in 2023.
 - Customers to use Ranleigh and Bedford entrances
 - Subway service will be open throughout
 - Bus transfer level will also be closed during this time. Customer access to buses will be available at street level.
- Station to be closed for three weekends in 2022
 - Shuttle buses will be deployed
 - Customer to access buses at street level
- Night work required on driveway at 3080 Yonge Street, two nights per week for debris removal and material delivery from vent shaft
 - Adjacent residential complex to be notified in advance of work
- Majority of work occurring within the station
 - Wayfinding signage to be posted throughout



Contact

- Email updates provided to all local subscribers

Questions:

Arjun Sahota

Community and Stakeholder Relations

Arjun.Sahota@ttc.ca

(647) 706 – 6487



