



# **Museum Station Easier Access and Second Entrance/Exit**

**Public Presentation**

August 2024

# New Second Entrance/Exit at Museum Station (open)






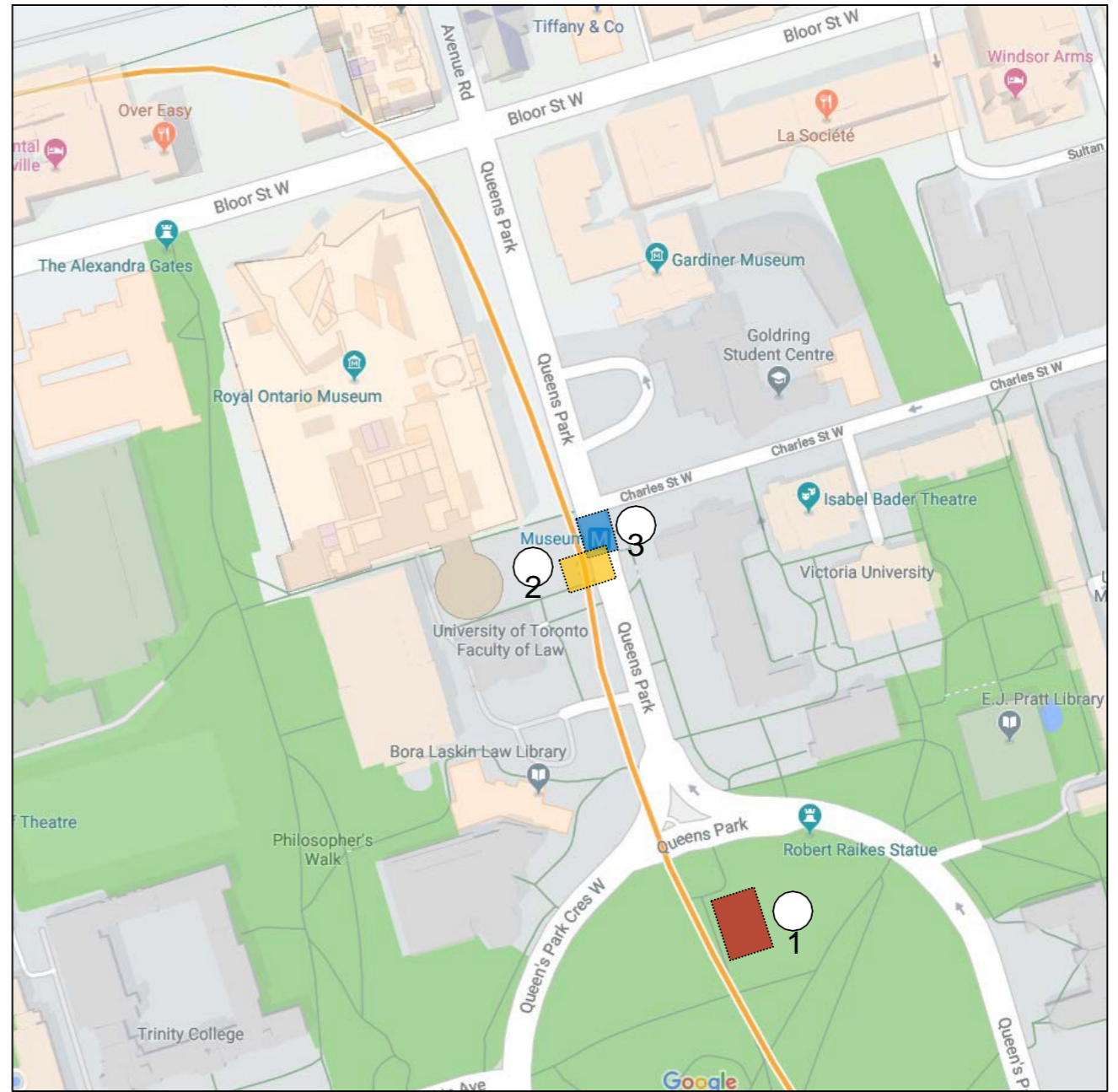
# Future Elevator for Museum Station



# Background

Upgrades at Museum Station are scheduled to be completed by the end of 2025\*:

-  1) Second Entrance/Exit (completed May 2024)
-  2) Easier Access – accessible upgrades
-  3) Rehabilitation of subway roof structure

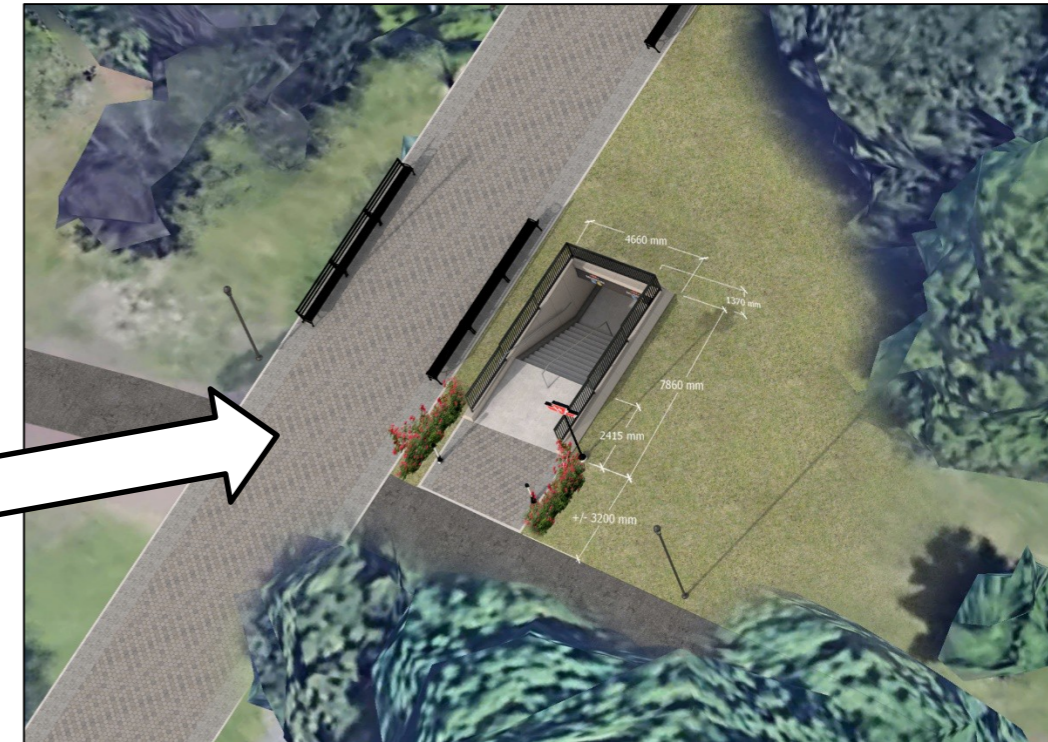


## Second Entrance/Exit

- Museum Station only had entrances and exits at the north end of the station until May 2024.
- TTC added a second exit/entrance within the **north end** of Queen's Park to enhance customer safety. It opened May, 2024.

# Queens Park North – second entrance/exit renderings

Aerial view of north end of Queen's Park Circle



Close-up of new second entrance/exit

# Queen's Park Circle – second entrance/exit



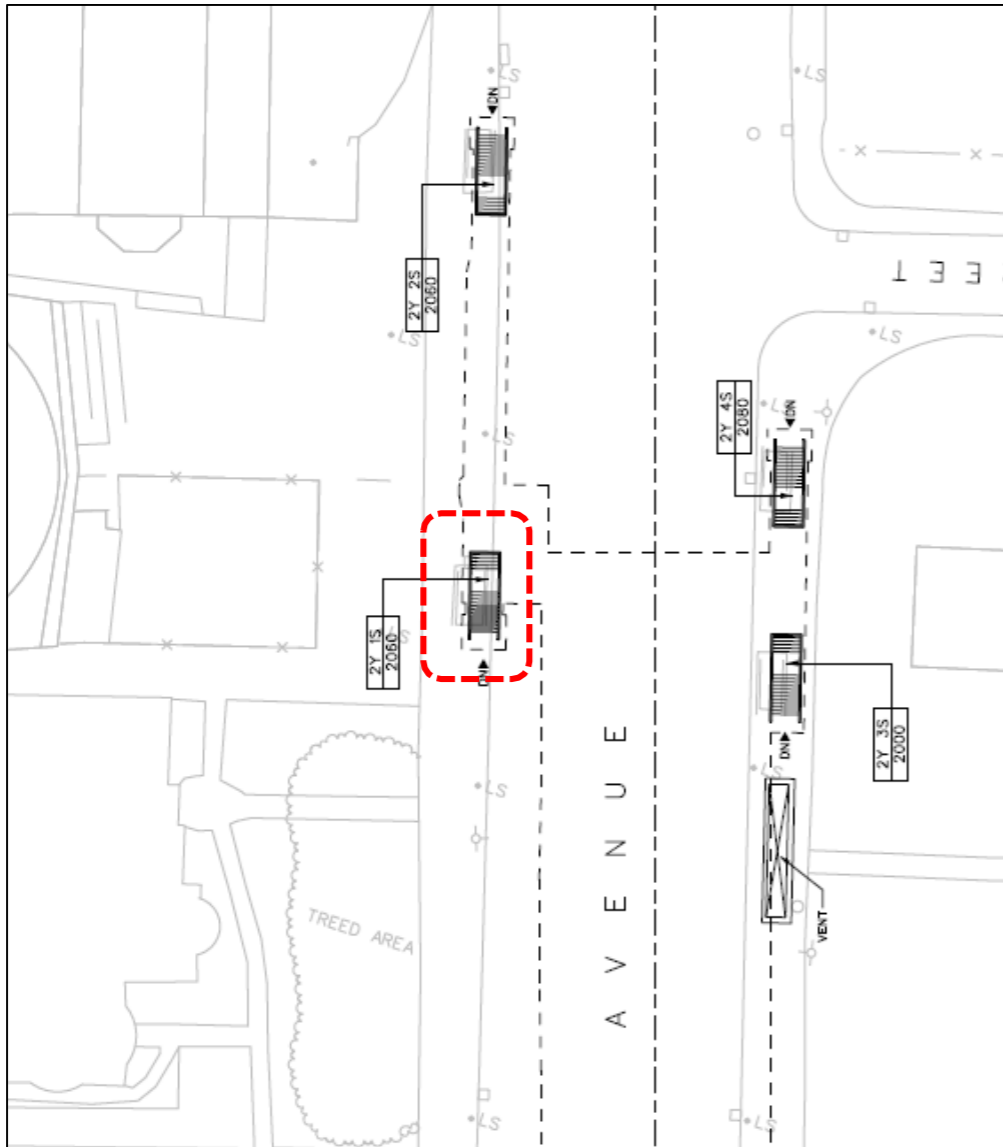
# Construction Completed – Secondary Entrance



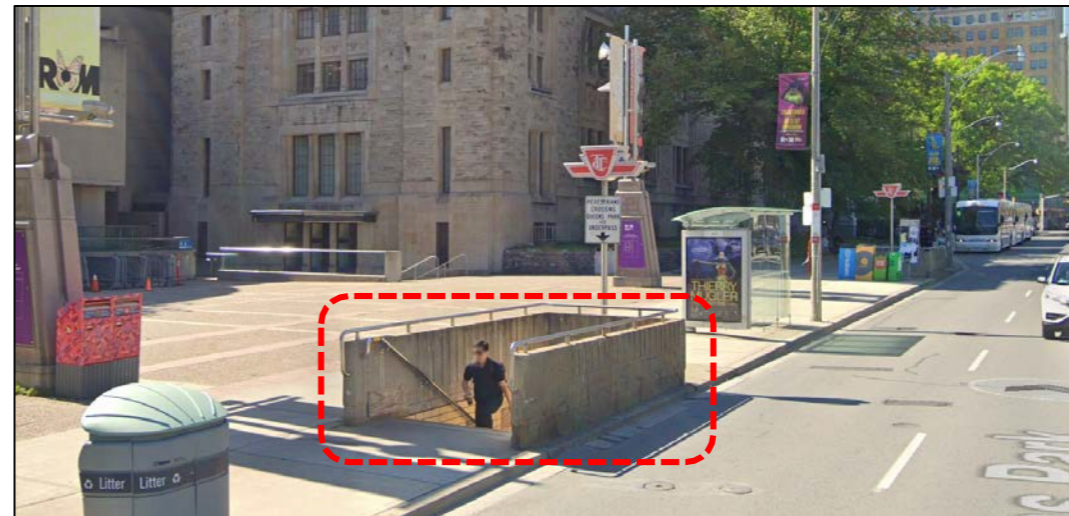
- Pedestrian movement north-south across the park and adjacent to work zone will be maintained
- Clear pedestrian signage will be installed.
- Construction vehicles and equipment will enter from the north
- Trees will be protected or transplanted and relocated as required
- Furniture, pavers, landscaping will be restored at the end of construction



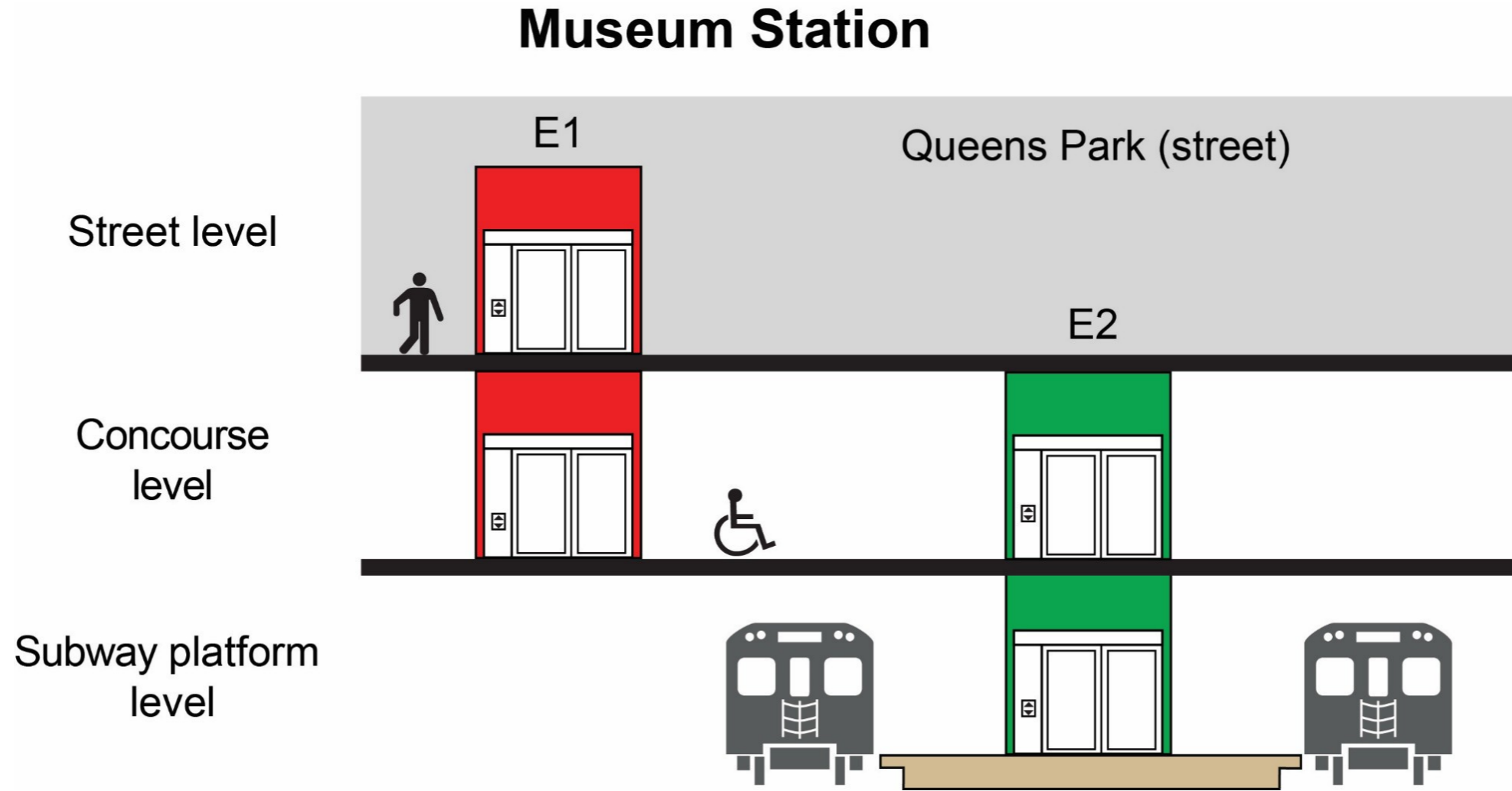
# Museum Station – elevator at street level

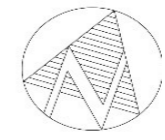


Existing south stairs on west side will be permanently closed and reconstructed to house new elevator structure – street level to concourse (E1)



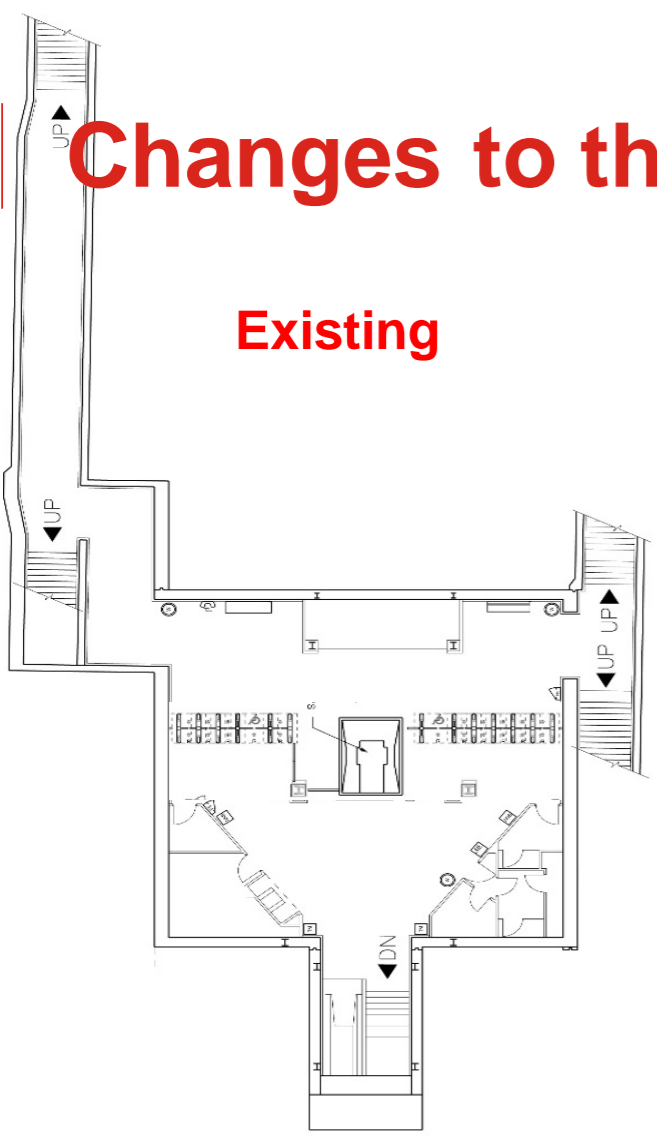
# Museum Station Elevator Plan



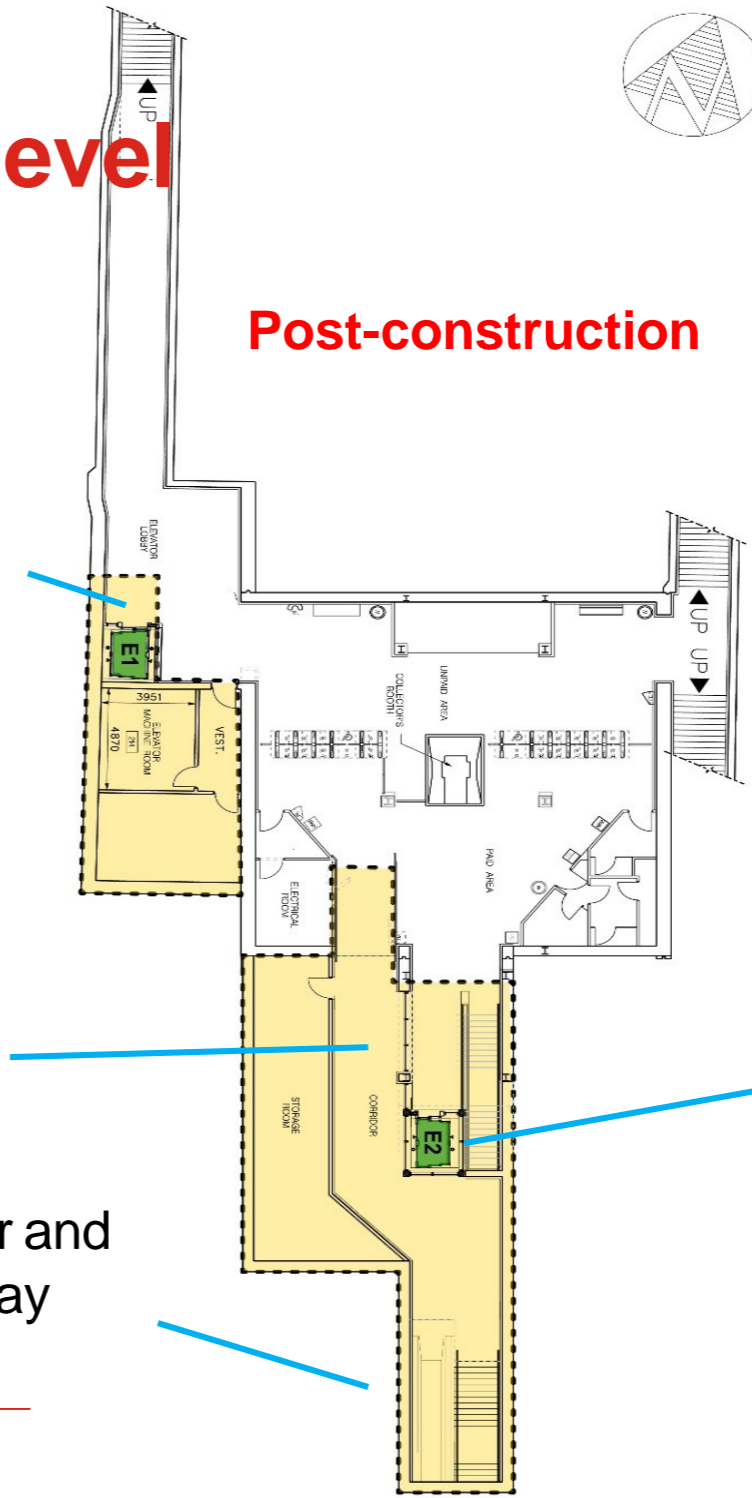


# Changes to the concourse level

## Existing



## Post-construction



Existing stairs on west side converted to new elevator (street to concourse)

New ramp and corridor

New escalator and stairs to subway platform level

- Existing escalator replaced with new elevator (concourse to subway platform)
- Stairs reconstructed



## Changes to the concourse level

- Many structural elements at the concourse level will be reconstructed, including:
  - Constructing two elevators – street to concourse (E1) and concourse to subway platform (E2)
  - Removing an existing escalator to make way for E2 elevator
  - Constructing new staircase and escalator.

# Changes to the concourse level

- To complete this concourse work safely, the existing north entrances to Museum Station will be closed starting **September 3, 2024 to mid 2025**.
- All customers will be directed to the new Queen's Park Circle entrance.



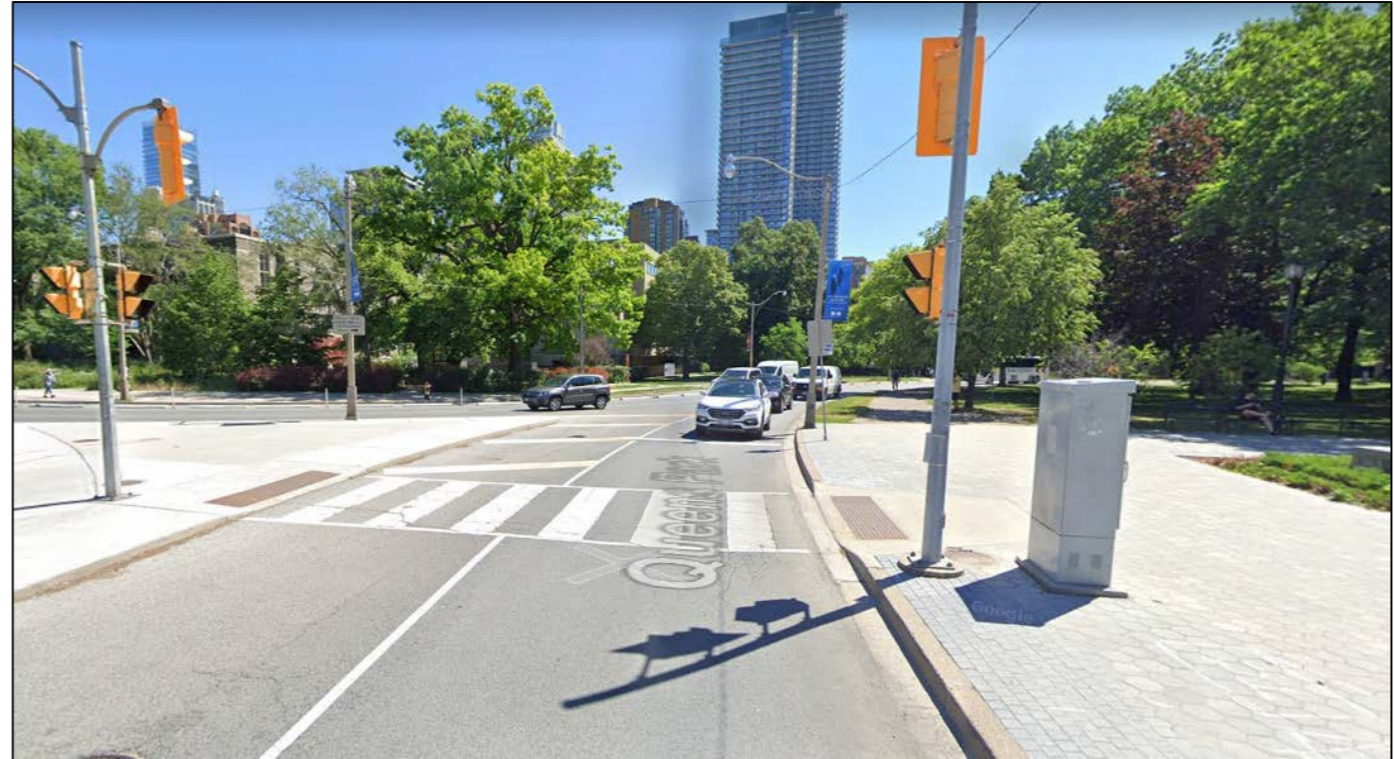
*New second entrance/exit at north end of Queen's Park Circle*

## Structural Rehab

- The station roof below Queen's Park (street) requires rehabilitation and waterproofing.
- Will occur concurrently with Easier Access work and temporary lane closures on Queen's Park

# Temporary pedestrian crossing closures

- During work hours, temporary closures of the north pedestrian crossing are expected when work vehicles are entering/exiting the work zone.
- Flagpersons will assist pedestrians as required.



*North end of Queen's Park Circle, looking east*

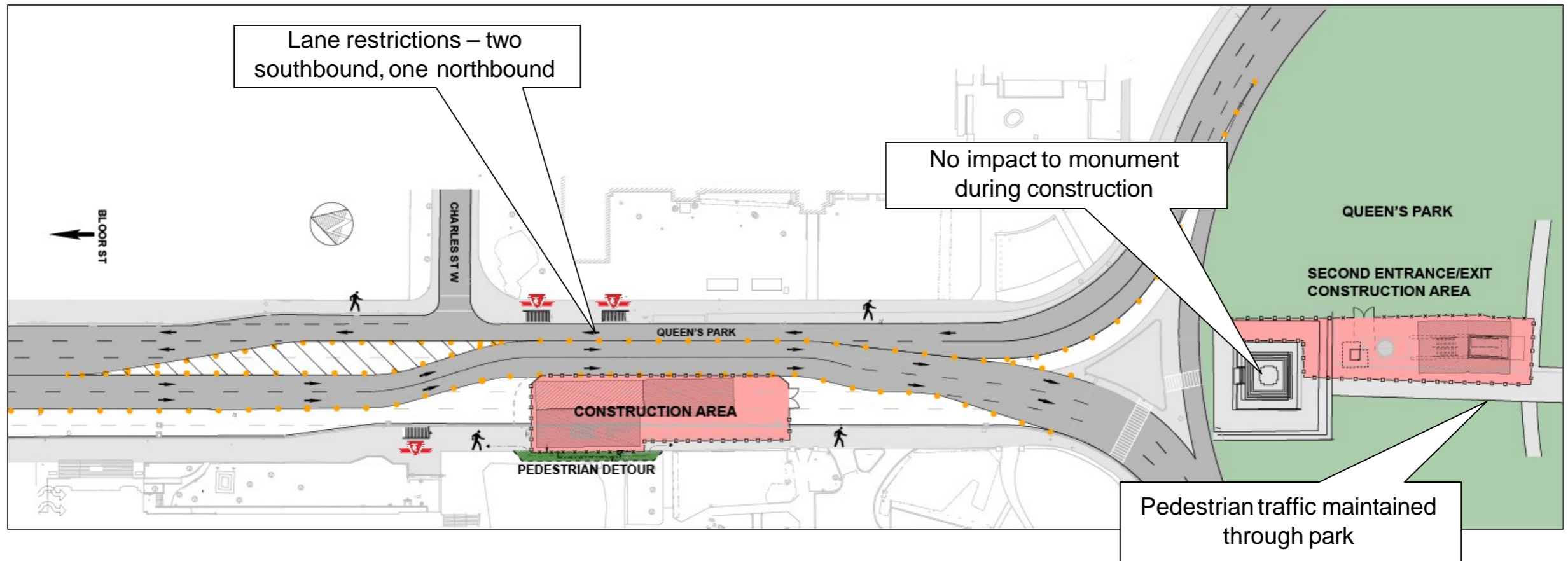
## | Construction traffic staging on Queen's Park (street)

- Lane restrictions will be in effect south of Bloor Street
- Minimum one traffic lane in each direction maintained at all times
- Cycling detour in effect – see slide 22



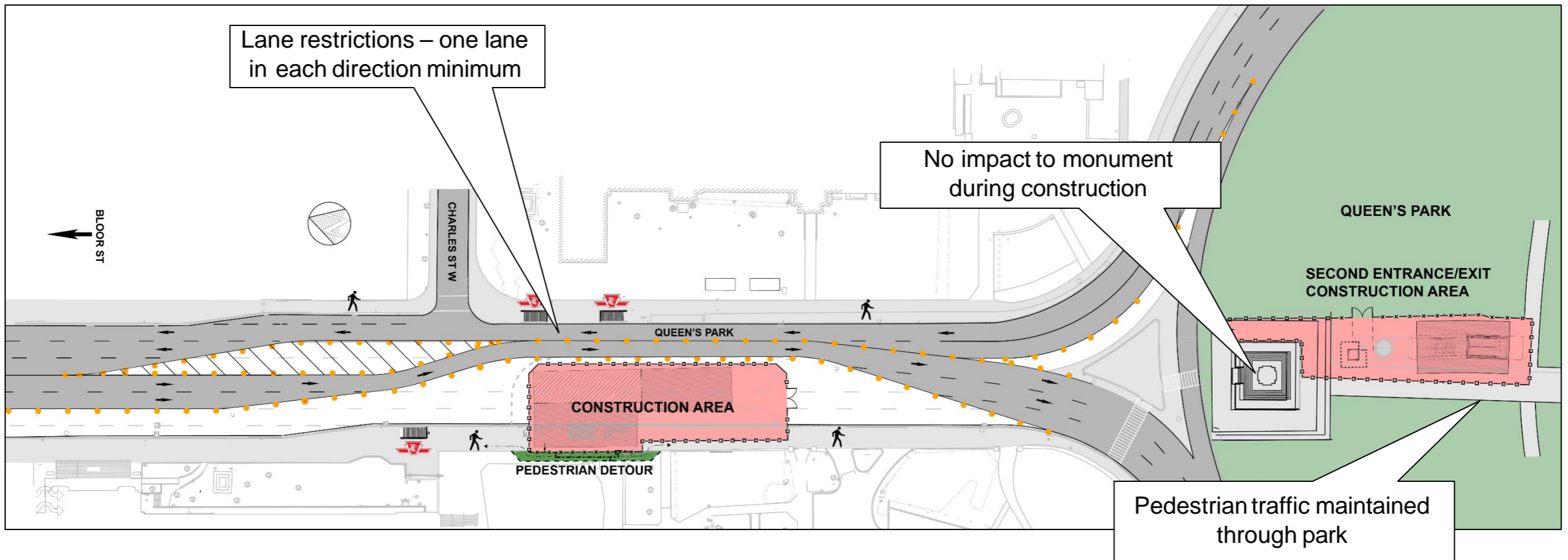
# Phase 1A – July 2022 to December 2022 (Completed)

- Easier Access and Second Entrance/Exit construction



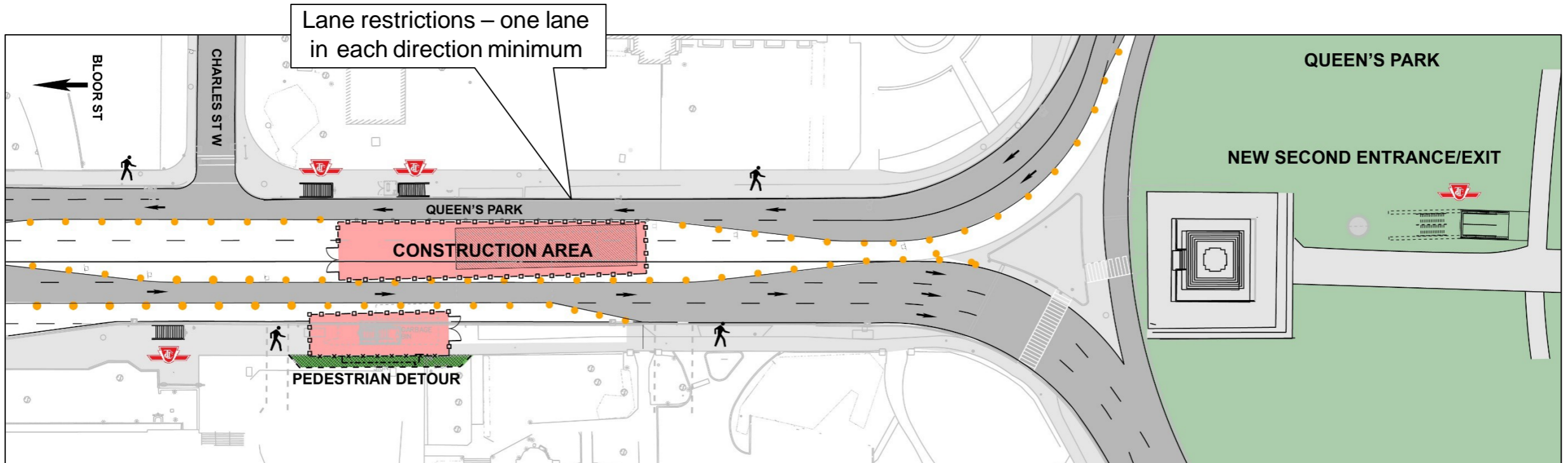
# Phase 1B – Q4 2022 to Q2 2024\* (complete)

- Easier Access and Second Entrance/Exit construction



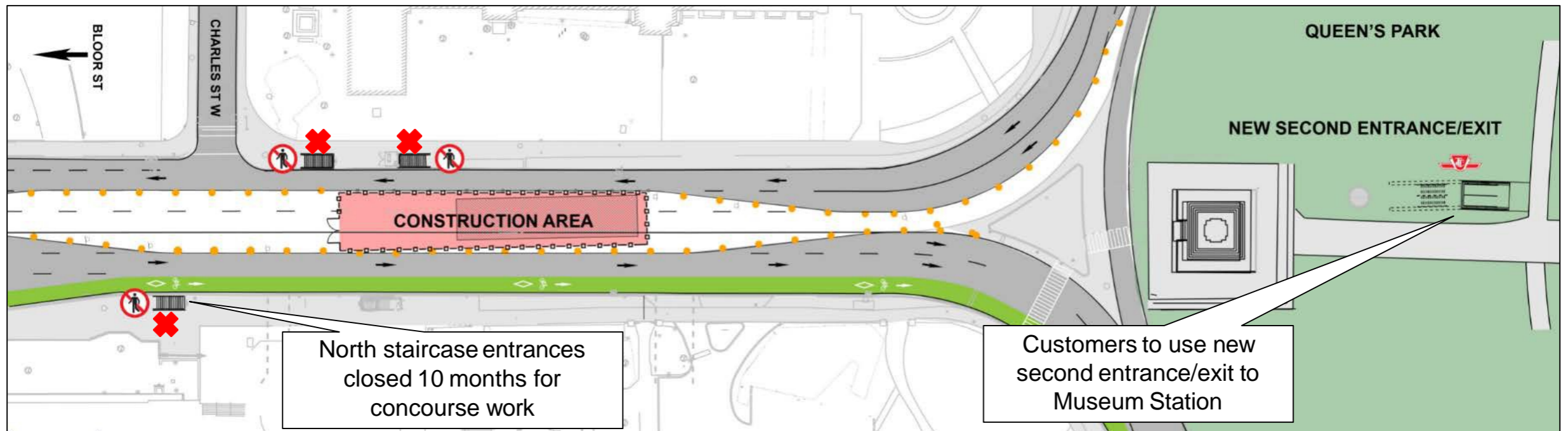
# Phase 2 – Q2 2024 to Q4 2024\*

- New second entrance/exit in Queen's Park open



## Phase 3 – Q4 2024 to Q3 2025\*

- North entrances to Museum Station will be closed in Phase 3 for approx. 10 months
- Customers to use the new second entrance/exit in Queen's Park Circle during this time
- Re-designating southbound curb lane as a bike lane – City Transportation

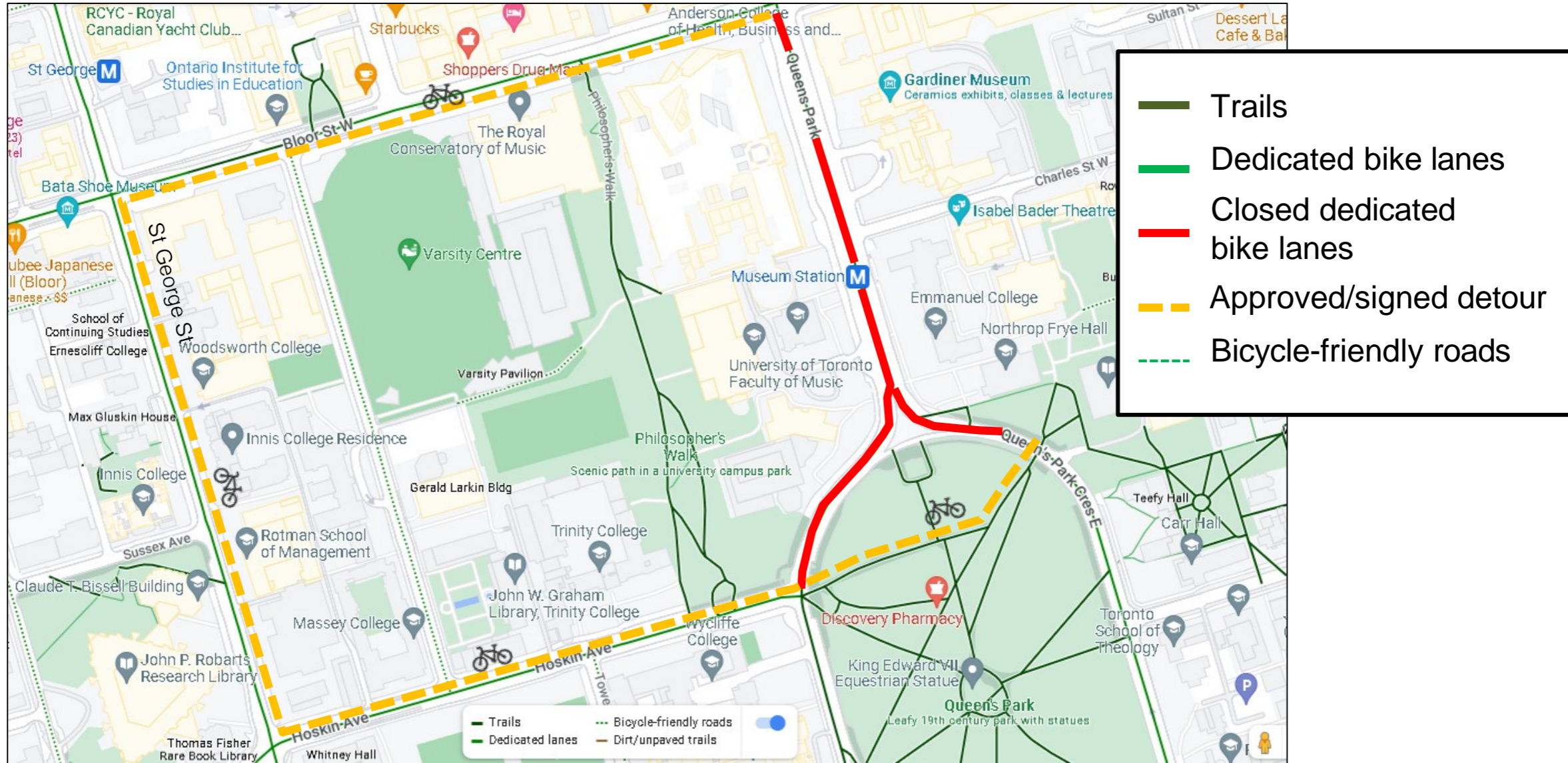


## Phase 4 – Q3 2025 to Q4 2025\*

- All entrances open to TTC customers
- Rehabilitation and waterproofing work at north entrance of Museum Station
- One northbound and one southbound vehicle lane
- Re-designating two curb lanes as bike lanes - City Transportation



# Cycling detour during construction on Queen's Park



# Construction Details and Transit Information:

- Major construction activities include shoring and excavation of elevator shafts – phased lane closures required
- Work will typically take place Monday to Friday between 7 a.m. and 7 p.m. Some work on weekends between 9 a.m. and 7 p.m. may be required. For safety, overnight work may be required.
- Efforts will be made to keep disruption associated with noise and dust to a minimum
- Access to subway service will be maintained throughout construction.



## | Questions or comments?

Connect with the community liaison for this project for any questions or comments, or to be added to the project mailing list:

Gurjeet Kaur, Senior Community Liaison Officer, 437 551 4407, [gurjeet.kaur@ttc.ca](mailto:gurjeet.kaur@ttc.ca)

The station is scheduled to be accessible by Q4 2025.



