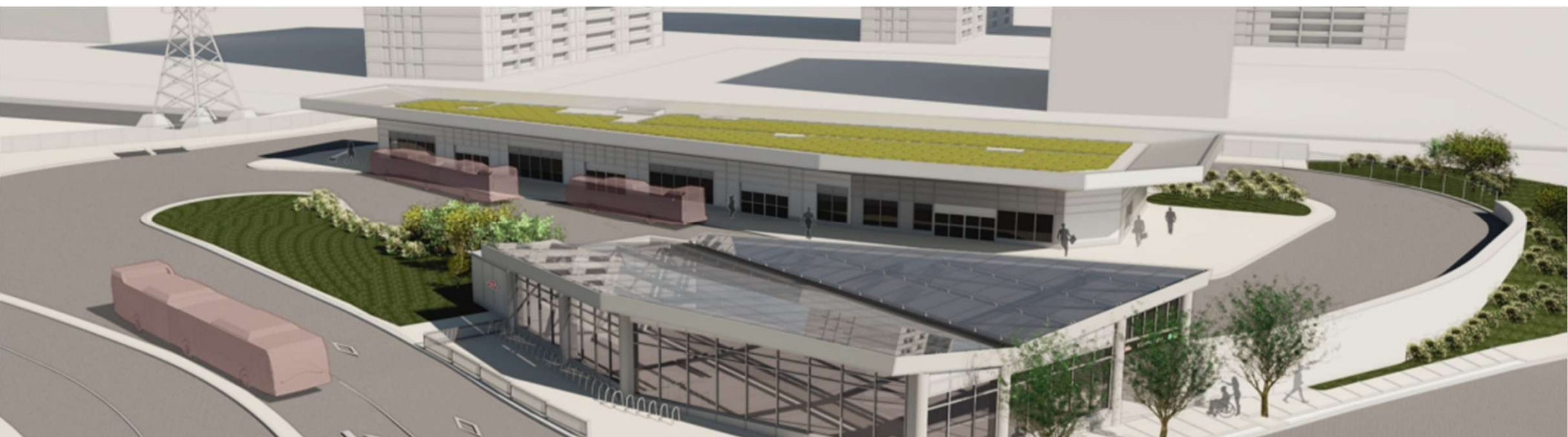




Islington Station Easier Access and Redevelopment Project

Public Open House

January 28, 2026



Status of Easier Access Phase III Program

- The TTC's Easier Access Program aims to retrofit new elevators, accessible doors, updated signage and wayfinding at all subway stations.
- 63 of 70 stations are now accessible. 7 stations are under construction to receive AODA enhancements:
 - 6 Stations are scheduled to achieve AODA accessibility in 2026
 - College, Greenwood, **Islington**, King, Museum, and Spadina
 - 1 Station is scheduled to achieve AODA accessibility in 2028
 - Old Mill
- At Islington, two major elements are scheduled for completion by the end of 2026:
 - Accessible entrance on the west side of Islington Avenue and Aberfoyle Crescent.
 - Elevator in-service from the subway platform to Station concourse.

| Islington Station – Easier Access Phase III and Redevelopment Overview

- Redevelopment of Islington Station involves:
 - New Bus Terminal to accommodate five bus bays.
 - One bus bay designated as a Wheel-Trans stop.
 - New underground Bus Terminal Tunnel Link with two (2) retail spaces providing a connection between a new Bus Terminal and existing subway concourse.
 - A third retail space and one set of new escalators and staircases in the new Bus Terminal.
 - New West Entrance at Islington Avenue and Aberfoyle Crescent with ramps for barrier-free accessibility to existing subway concourse level.
 - Improved streetscape in collaboration with the City of Toronto and CreateTO, and Public Art throughout the new station facility.
- Improvements to the existing Station:
 - One (1) elevator will be installed providing a barrier free path from the existing subway concourse level to the platform level.
 - Selective repairs to finishes and wayfinding tiles throughout the Station.



Islington Station – Construction Impact and Mitigation

- Escalator at the east entrance of Islington Station has been converted to a staircase.
- Conversion is required to maintain emergency exit routes during construction as required by the Ontario Building Code.
- Scheduled restoration of the escalator in Q4 2026.
- **Accessible On-Street Travel Options:**
 - **Route 149 Etobicoke–Bloor:** Accessible service between Kipling Station and Jane Station. (Effective February 8, 2026)
 - Bus pickup at Islington Avenue & Bloor Street West.
 - 7 days a week, from 6:00 a.m. – 1:00 a.m.
 - Every 25 minutes.

Station advisory



Entrance Escalator Out of Service

The escalator has been converted for use as a staircase.

► **Escalator to be restored by the end of 2026.**

This is necessary to maintain emergency exit routes during construction.

Accessible travel option during construction Route 149 Etobicoke – Bloor:

The **149** bus provides accessible service between Kipling Station and High Park Station.

The bus is available at Islington Avenue and Bloor Street West.

Service Hours: 7 days a week, until 1 a.m.

Frequency: Every 25 – 30 minutes

Fare Payment: PRESTO card/Ticket, debit/credit, mobile wallet, or cash

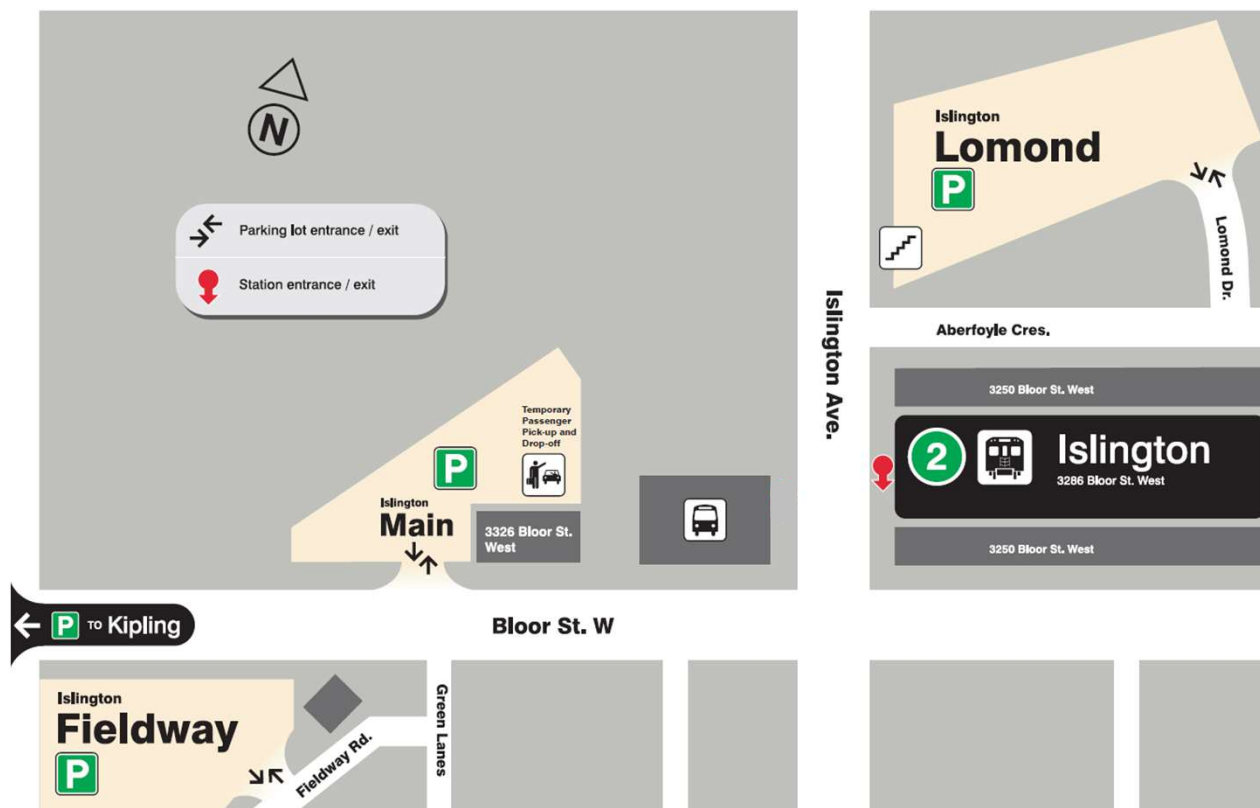


For more information [ttc.ca](https://www.ttc.ca)
or call 416-393-4636

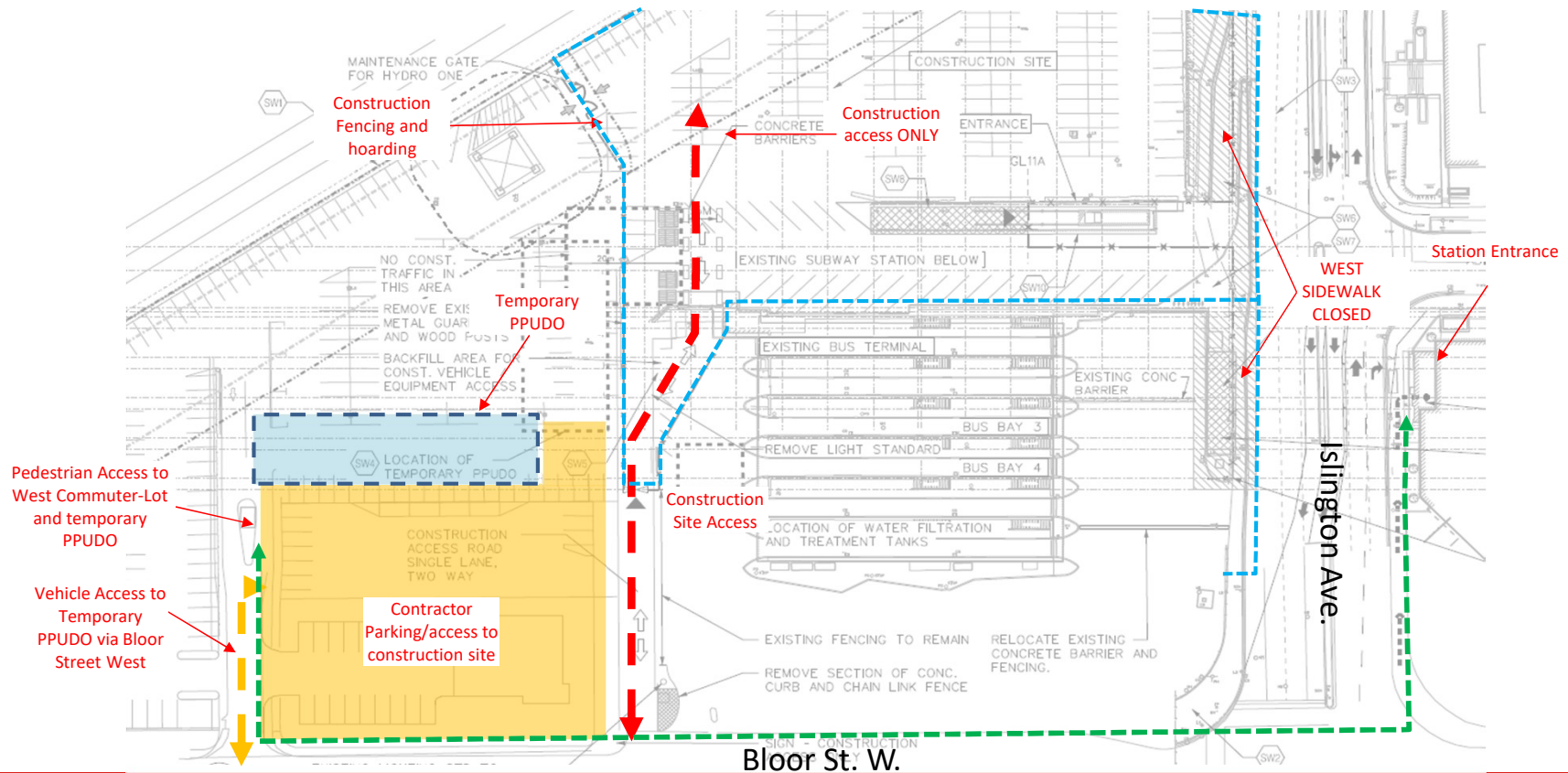


Islington Station – Redevelopment Impact and Mitigation (Parking and PPUDO)

- West Commuter Lot: **316 parking spaces** and a temporary Passenger Pick-Up Drop-Off (PPUDO)
- Lomond Commuter-lot: **193 parking spaces**
- Fieldway Commuter-lot: **160 parking spaces**

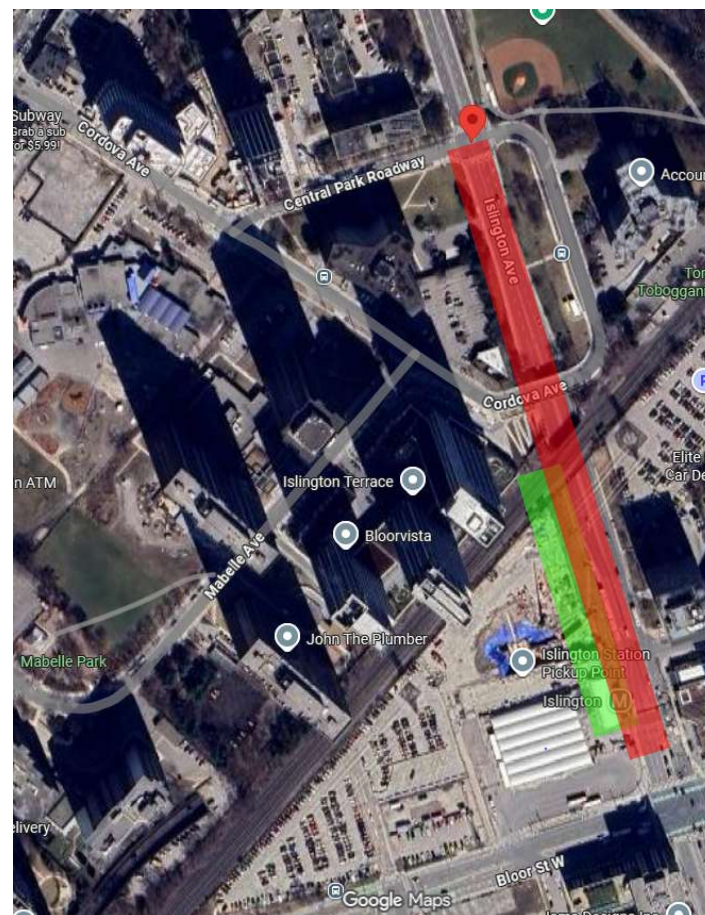


Islington Station: Temporary PPUDO and Pedestrian Access



Sidewalk Closure – Bloor St. W. to Central Park Roadway

- Relocating hydro poles on the west side of Islington Avenue – 8 phases of construction.
- Relocating water main infrastructure (west side, and east side of Islington Avenue).
- Roadway realignment of Islington Avenue, south of Cordova bridge.
- Relocating electrical room south of existing west entrance on TTC property.
- Constructing a new west entrance at Islington Avenue and Aberfoyle Crescent.



Sidewalk Closure – Impact and Mitigation

- Shortened sidewalk closure schedule – 18 months to 12 months.
- Expedited permit approvals via coordination with City staff.
- January 2026 – Improved Sidewalk barricades installed
- January 2026 – Improved wayfinding to Station installed
- QR code on wayfinding signage to translate information into native languages digitally.

Station advisory

Islington Avenue West Sidewalk Closed

► Access to be restored by the end of 2026.

Pedestrian Access:

Proceed via Cordova Avenue to Islington Avenue
or
Cross at Islington Avenue and Central Park Roadway

Alternate travel options during construction:

Route 40, Junction - Dundas West: Boards along Cordova Avenue and Mabelle Avenue, with an approximate travel time of 10 minutes to Kipling Station.

Route 149, Etobicoke – Bloor: Boards at Islington Avenue and Bloor Street West, operating between Kipling Station and High Park Station.

Service Hours: 7 days a week, until 1 a.m.

Fare Payment: PRESTO card/Ticket, debit/credit, mobile wallet, or cash



For more information [ttc.ca](https://www.ttc.ca)
Plan your trip, **scan the QR code:**



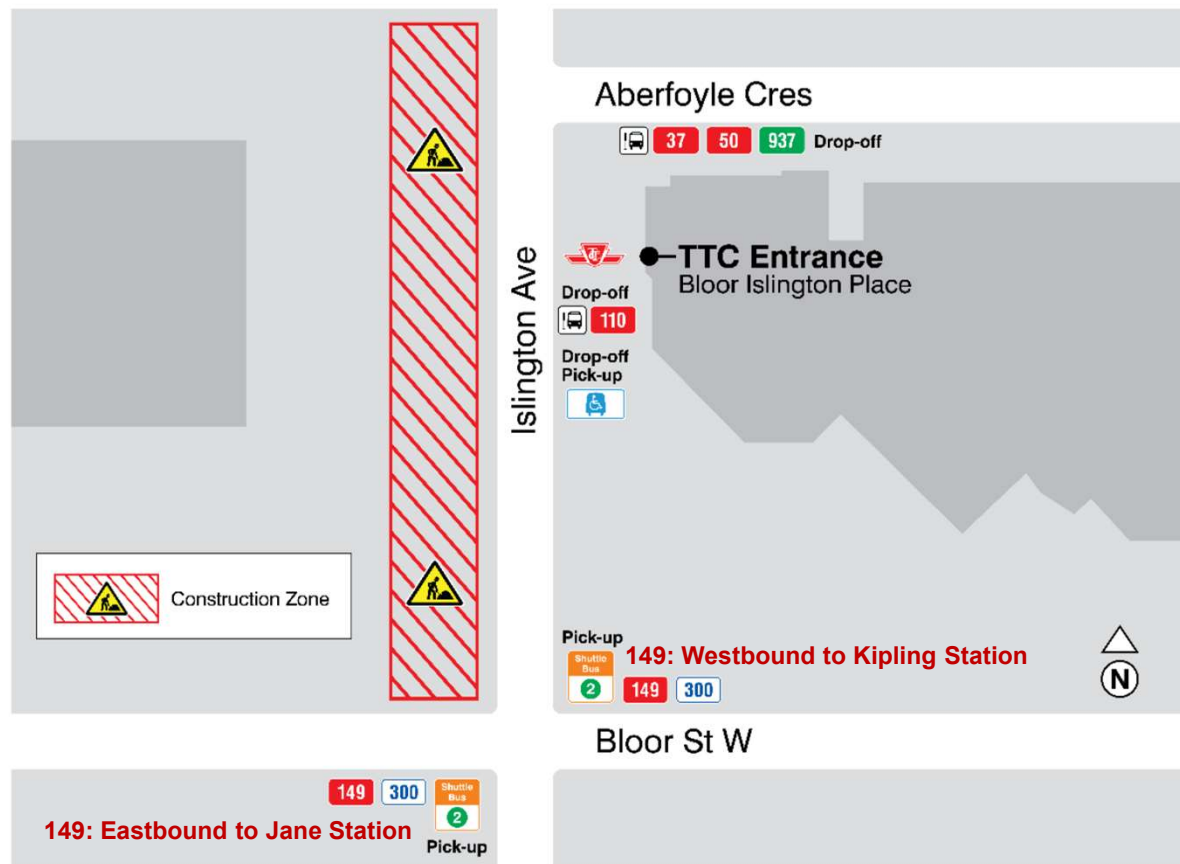
Islington Station: On-Street Bus Pick-Up/Drop-Off

149 Etobicoke – Bloor

- Boards at Islington Avenue and Bloor Street West, operating between Kipling Station and Jane Station.

Routes 37, 50, 937

- Drop-off at the south-east corner of Islington Avenue and Aberfoyle Crescent
- Provide a direct link to the main east entrance into Islington Subway Station.



| Islington Station – Redevelopment Rendering

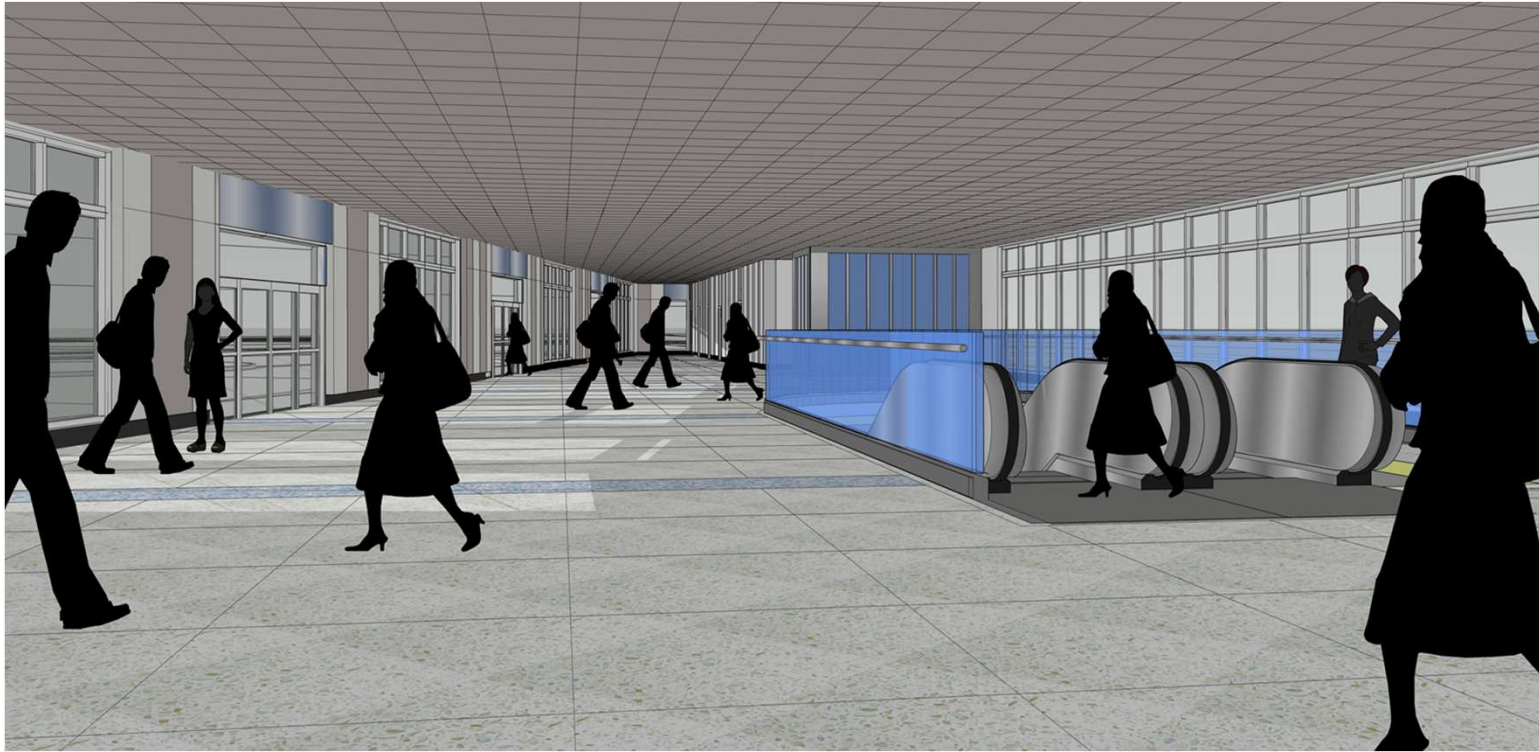
Exterior view of new Bus Terminal looking west



Note: Finishes shown are for presentation purpose and subject to change

| Islington Station – Redevelopment Rendering

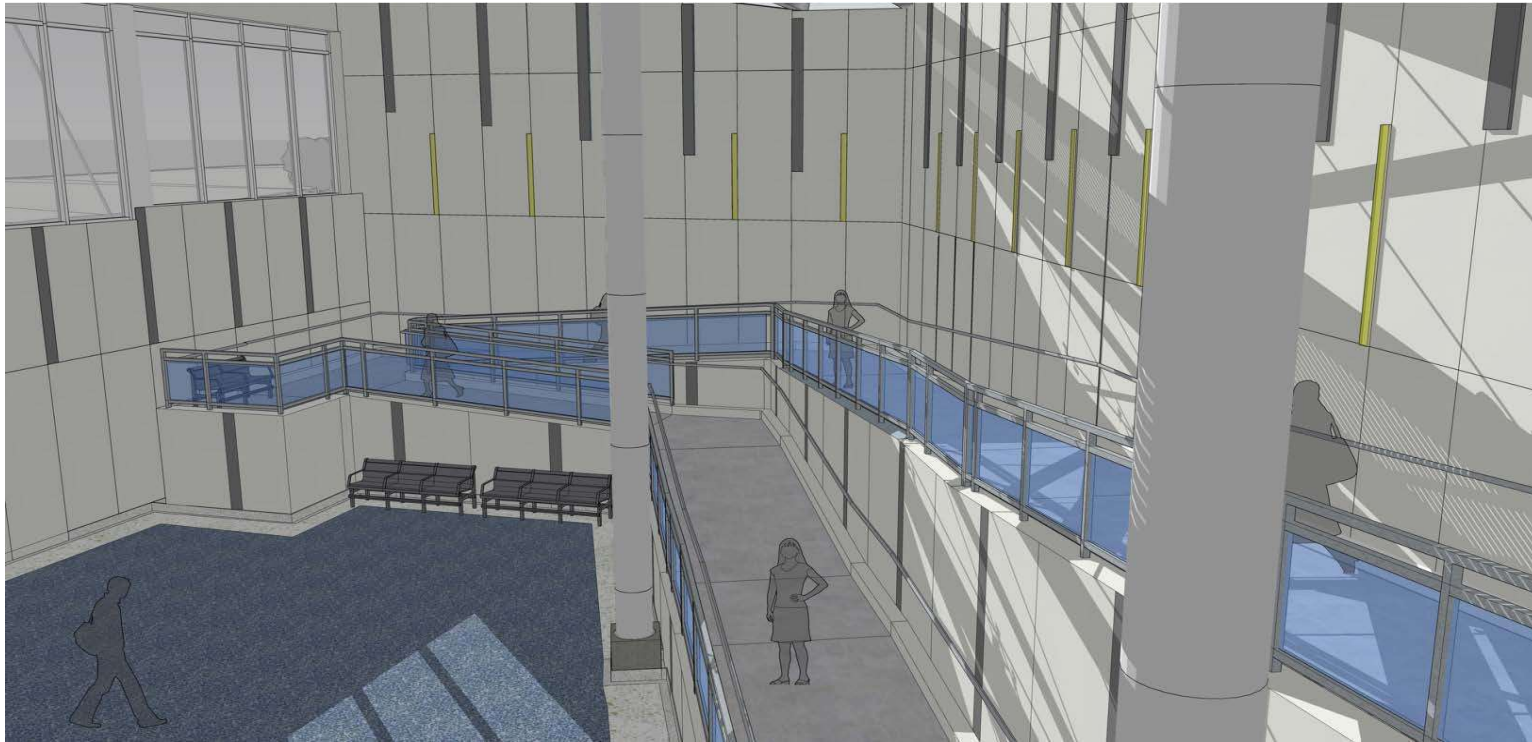
Interior view of new Bus Terminal looking west



Note: Finishes shown are for presentation purpose and subject to change

| Islington Station – Redevelopment Rendering

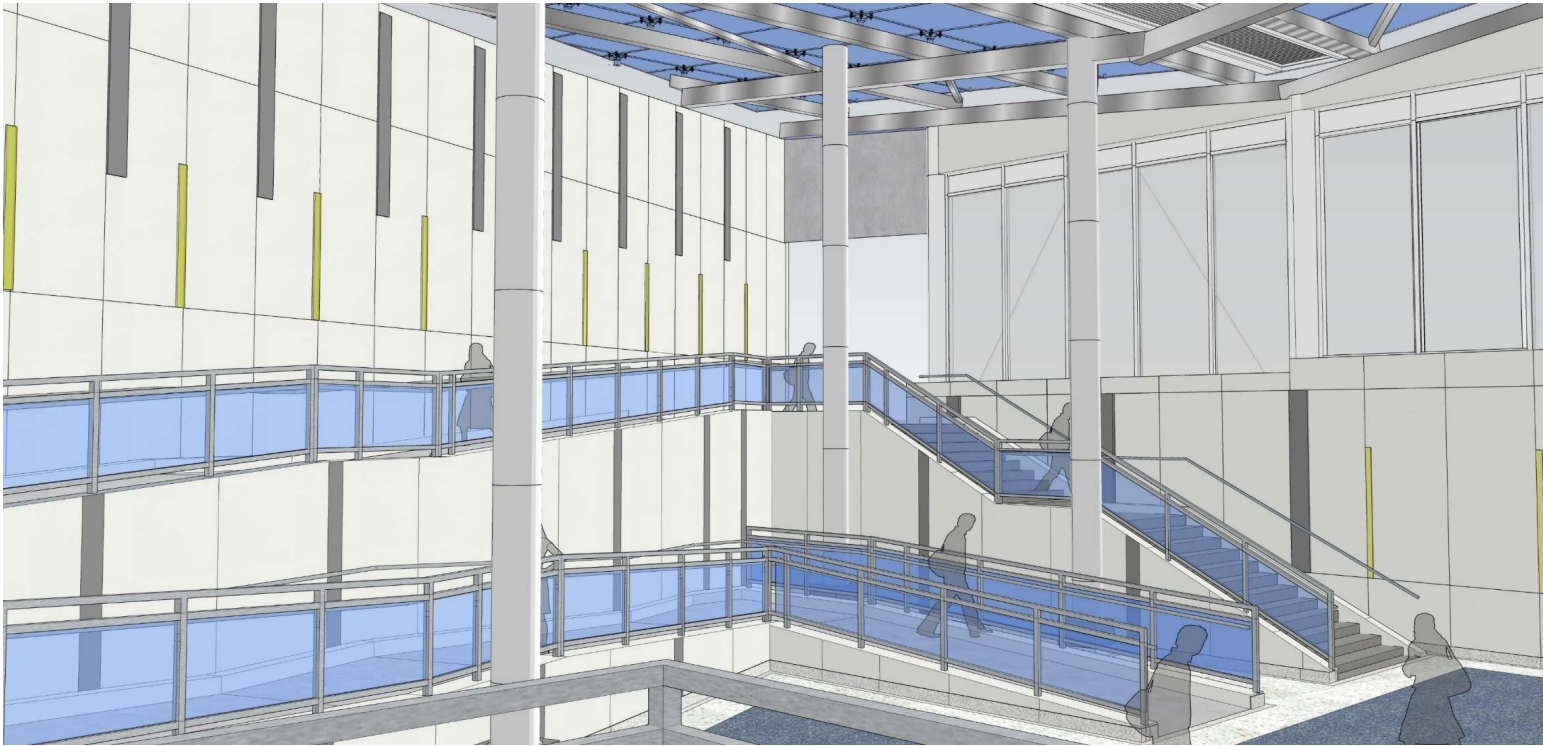
Interior view of new West Station Entrance



Note: Finishes shown are for presentation purpose and subject to change

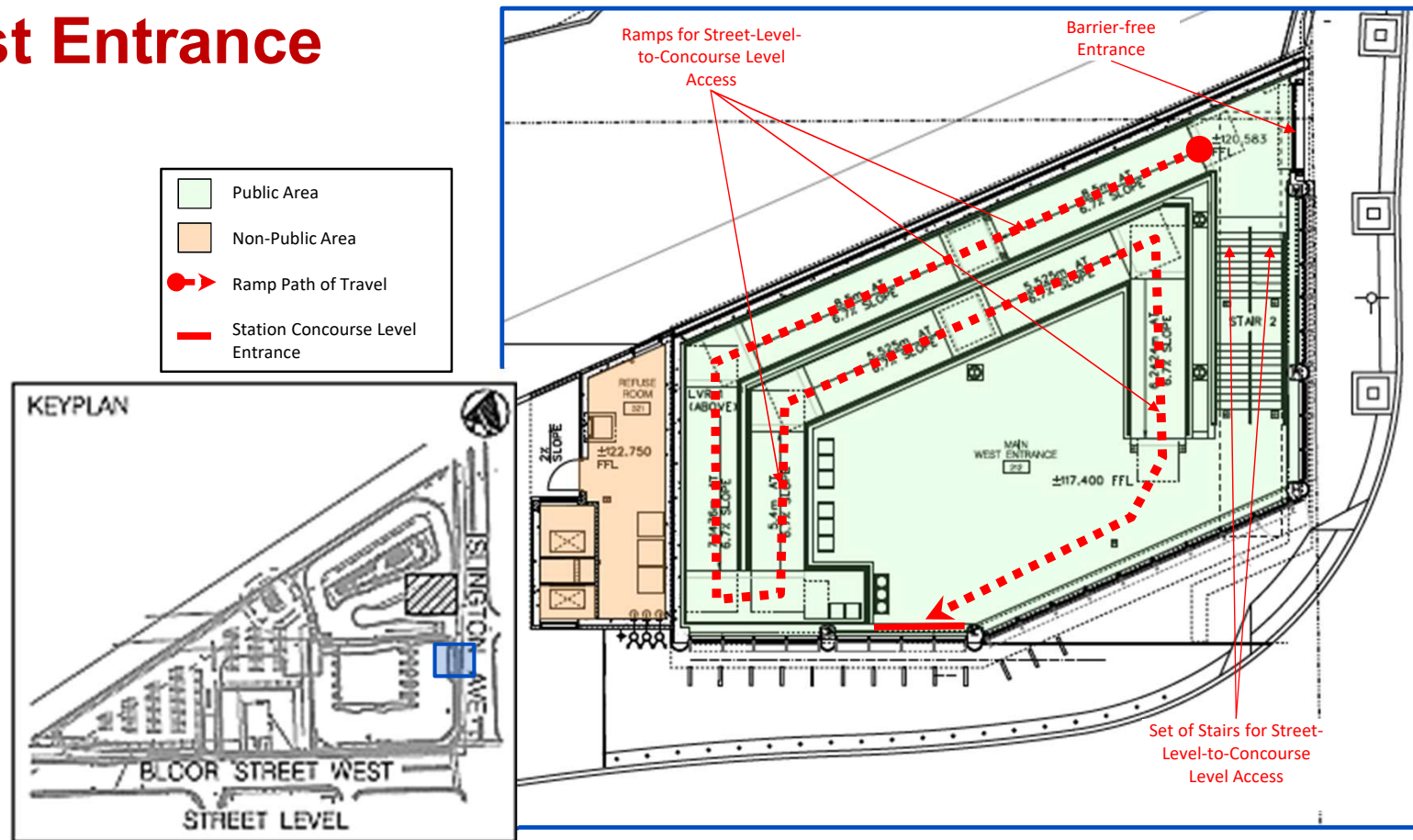
| Islington Station – Redevelopment Rendering

Interior view of new West Station Entrance

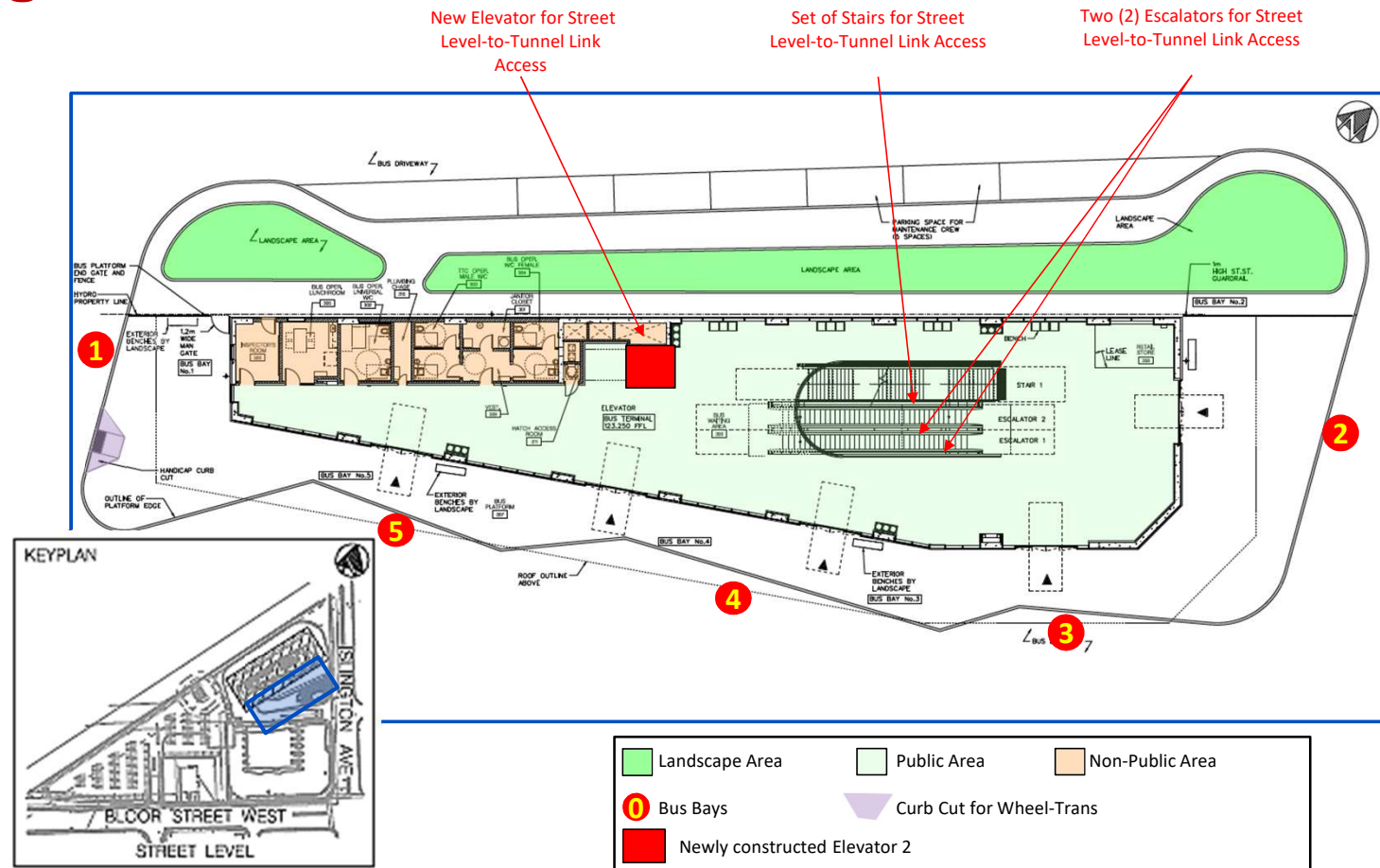


Note: Finishes shown are for presentation purpose and subject to change

Islington Station – Barrier-Free Accessible Path – New West Entrance

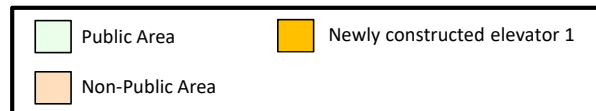
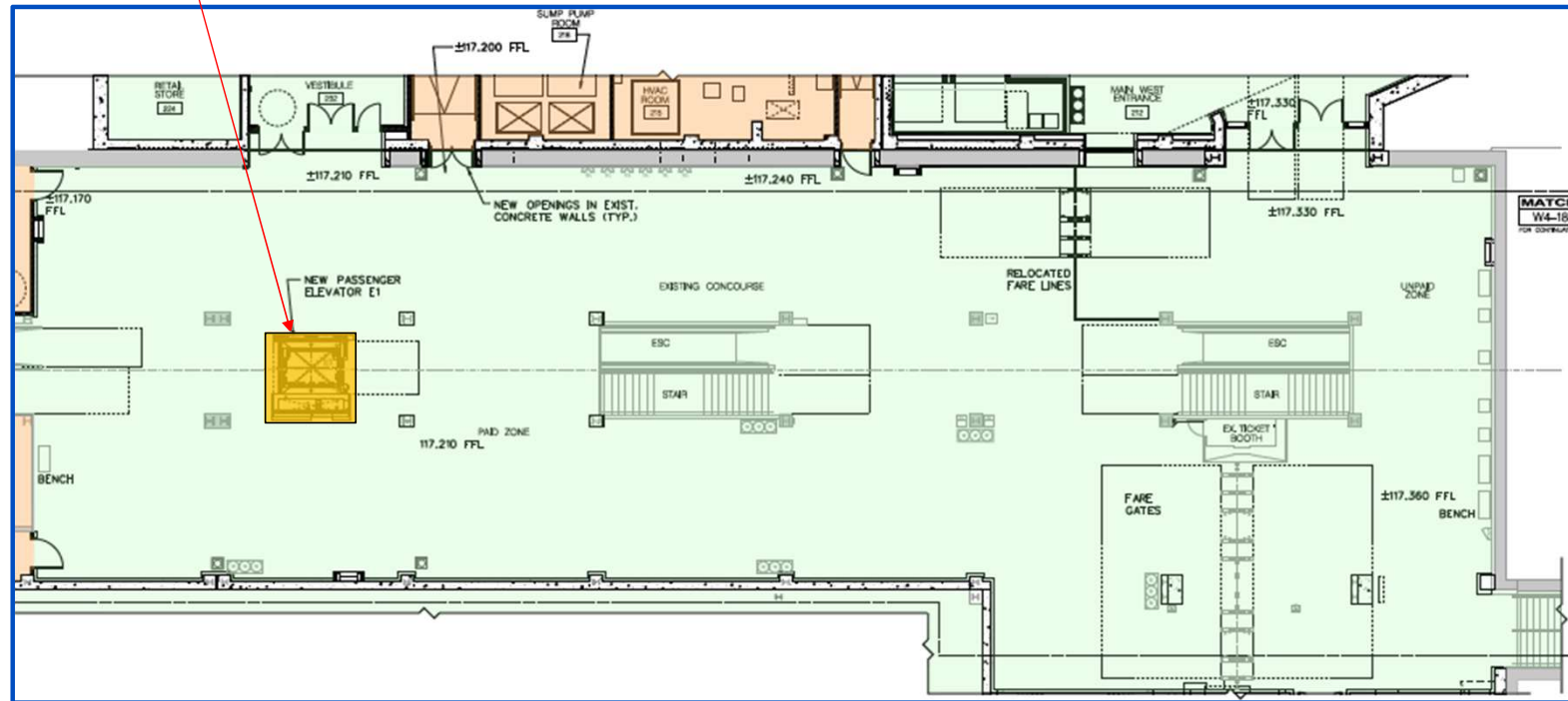


Islington Station – New bus Terminal – Ground Level



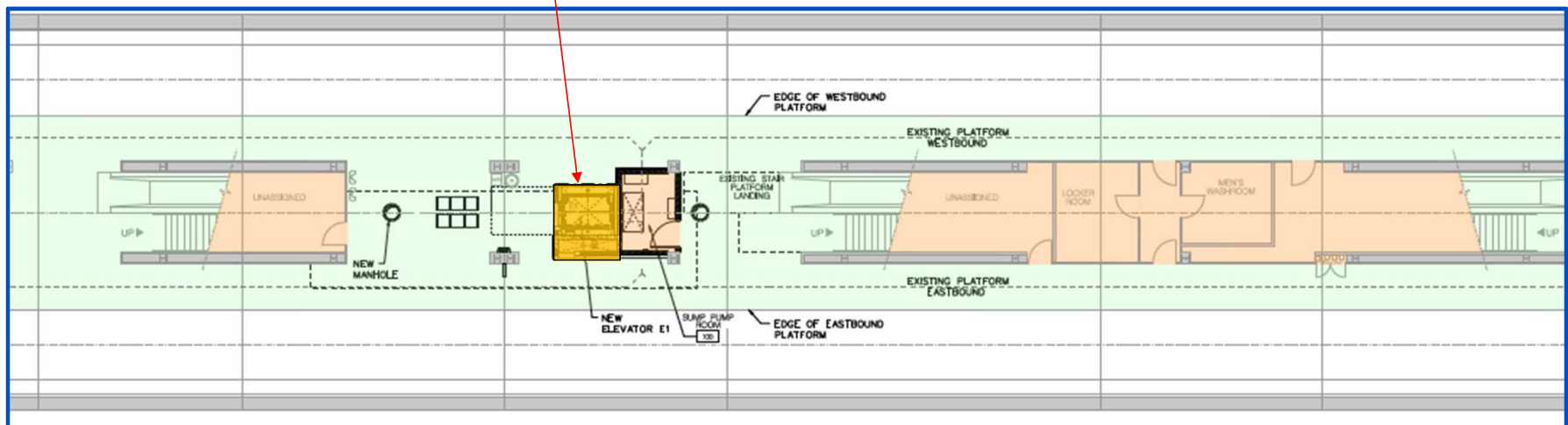
Islington Station – Subway Station Concourse Level

New Concourse Level-to-
Center-Platform Level
Elevator



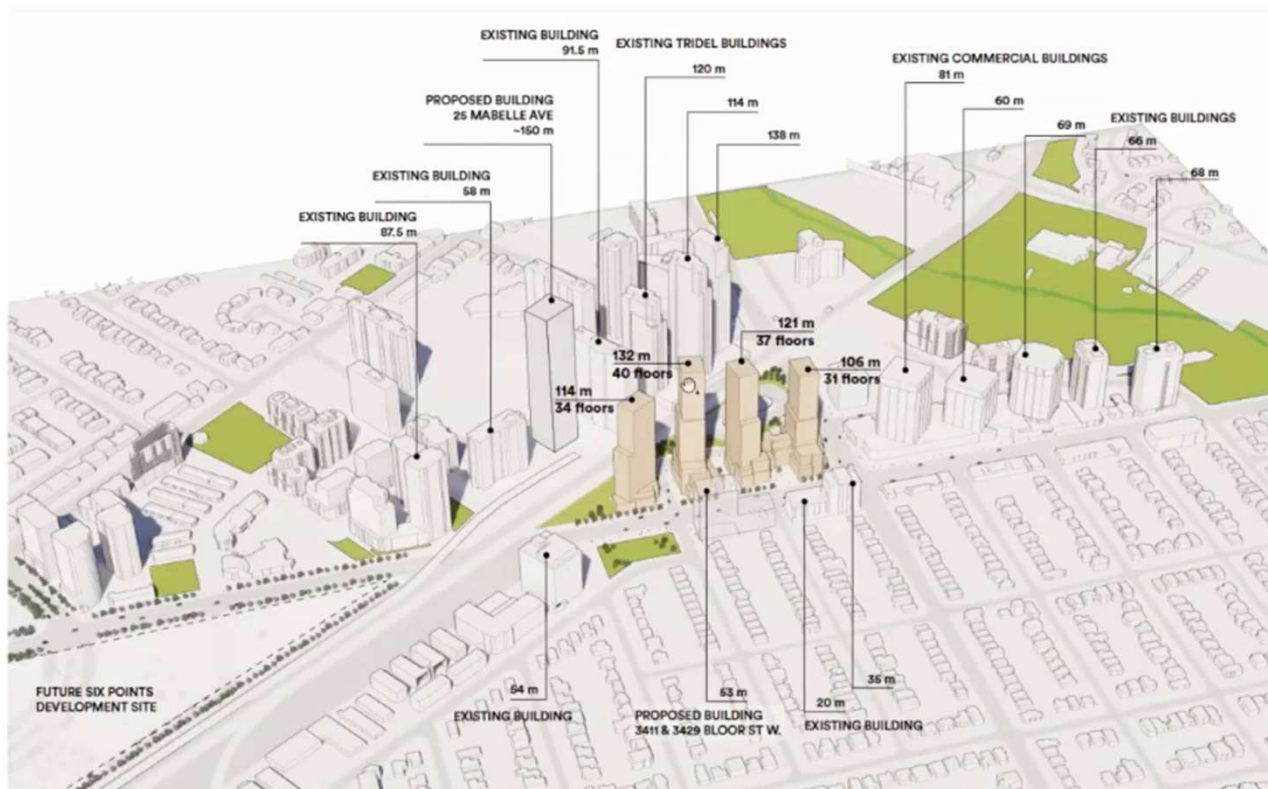
Islington Station – Accessible Path – Platform Level

One (1) Forward Motion Elevator for
Subway Concourse Level-to-Platform Level
Access

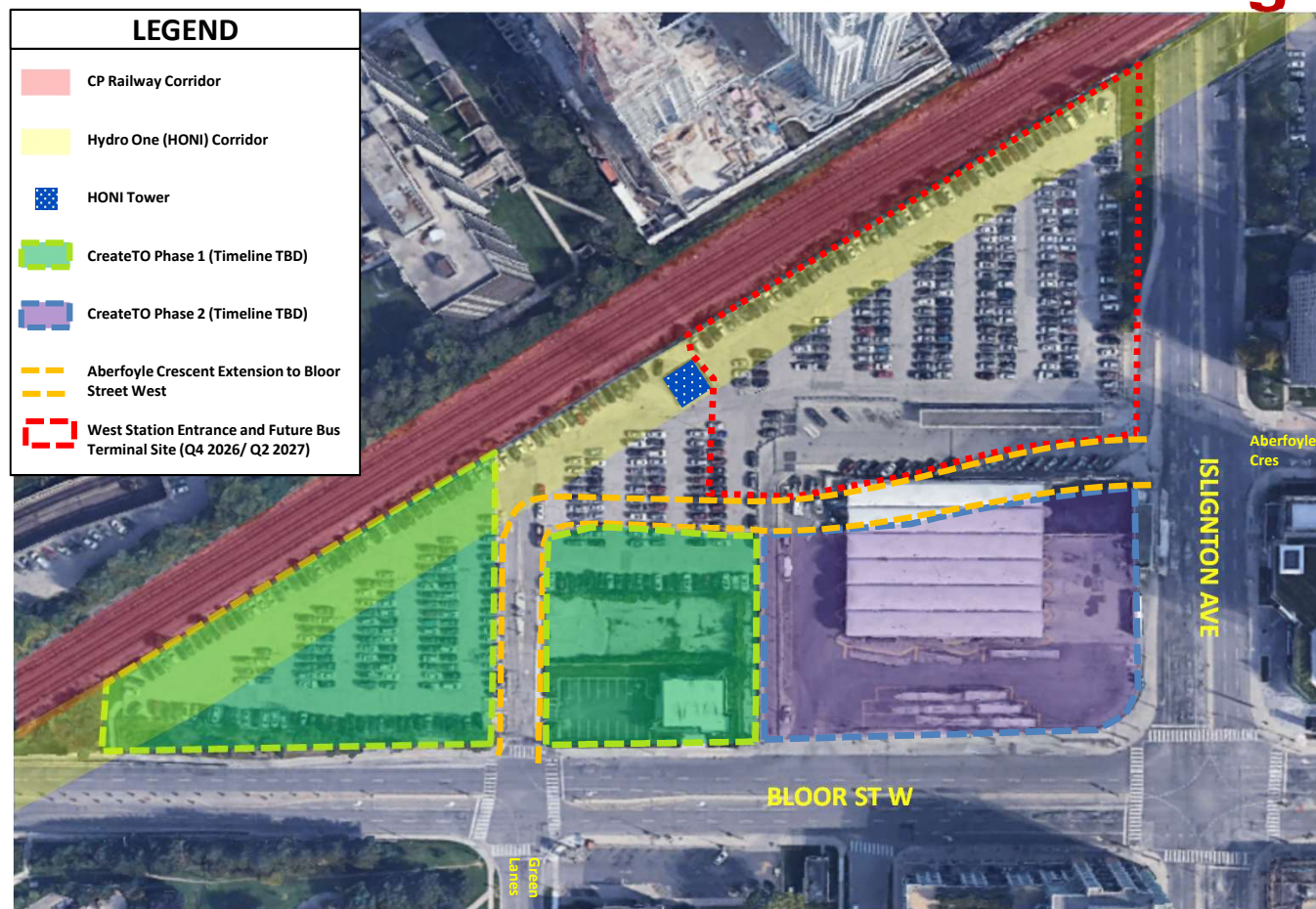


Site Redevelopment – Engagement with CreateTO

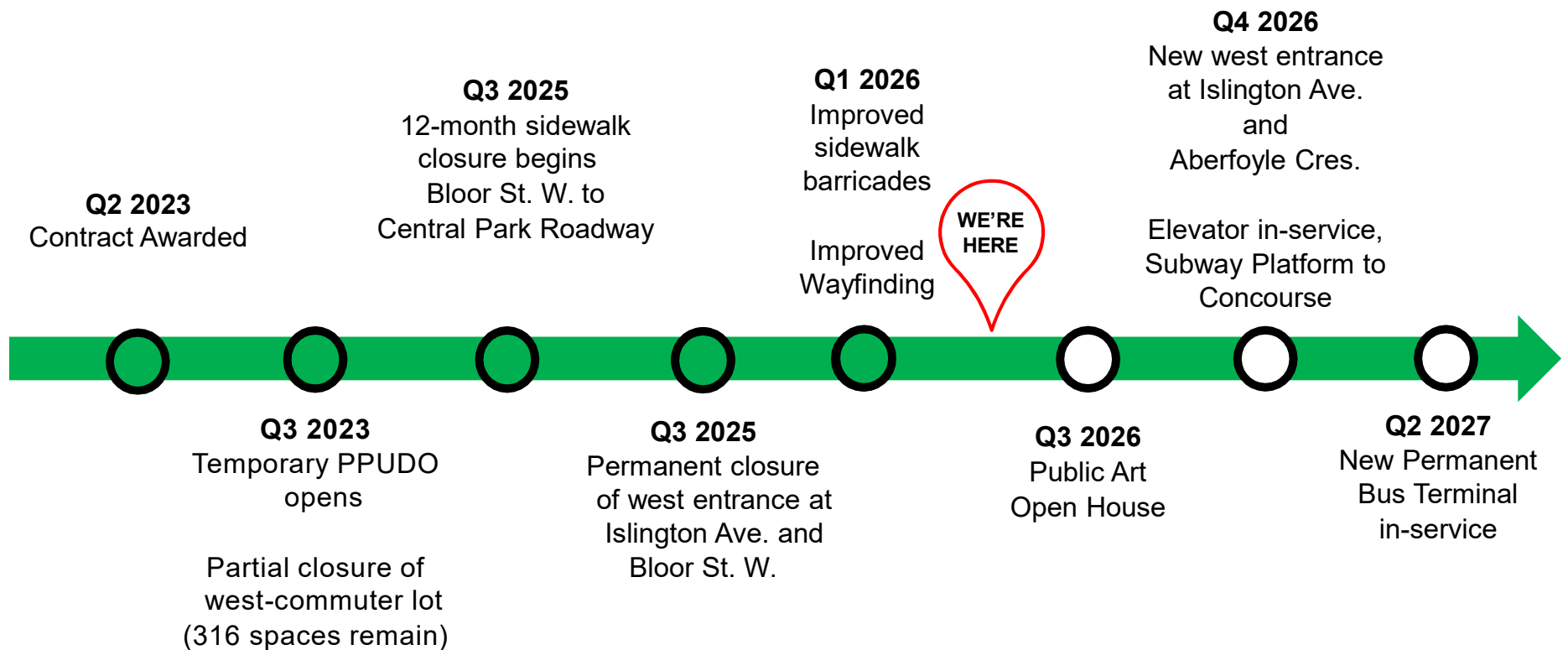
- In 2021, MiWay relocated bus service from Islington Station to the new Kipling Station Transit Hub.
 - MiWay now operates one route (Route 26) via on-street stops outside of Islington Station.
- CreateTO has identified the existing bus terminal land as an area for redevelopment.
- **Proposal:** Transit-oriented, mixed-use development featuring 1,400+ housing units, integrated with Islington Station.
 - A west-extension of Aberfoyle Crescent to Bloor St. W.
- **Timeline TBD:** This project was not included in the list of properties where subsidy funding will be allocated, in the Rental Housing Supply report. (2025)



Islington Station: Future Site & Surroundings



Project Schedule



Contact

- Email updates provided to all local subscribers

Questions:

Arjun Sahota
Community and Stakeholder Relations
Arjun.Sahota@ttc.ca
(647) 706-6487

